



DELHI PUBLIC SCHOOL

SAIL TOWNSHIP, RANCHI

ANNUAL EXAMINATION (2022-23)

Class - IX
Time - 3 Hours

Subject - Science
Maximum Marks - 80

General Instructions:

- i. This question paper consists of 39 questions in 5 sections.
- ii. All questions are compulsory. However, an internal choice is provided in some questions. A student is expected to attempt only one of these questions.
- iii. Section A consists of 20 objective type questions carrying 1 mark each.
- iv. Section B consists of 6 Very Short questions carrying 02 marks each. Answers to these questions should be in the range of 30 to 50 words.
- v. Section C consists of 7 Short Answer type questions carrying 03 marks each. Answers to these questions should be in the range of 50 to 80 words.
- vi. Section D consists of 3 Long Answer type questions carrying 05 marks each. Answers to these questions should be in the range of 80 to 120 words.
- vii. Section E consists of 3 source-based/case-based units of assessment of 04 marks each with sub-parts.

SECTION:- A

1. The body A can move with a speed of 8 m/s against the frictional force of 10 N, and the body B can move with a speed of 4 m/s against the frictional force of 25 N. The ratio of power delivered by A with respect to B is:- [1]
 - (a) 4 : 5
 - (b) 2 : 5
 - (c) 3 : 5
 - (d) 6 : 5
2. According to the third law of motion, action and reaction. [1]
 - (a) always act on the same body
 - (b) always act on different bodies in opposite directions
 - (c) have same magnitude and directions
 - (d) act on either body at normal to each other
3. The linear momentum of a body of mass 2 kg is 16 kgm/s. What is its K. E? [1]
 - (a) 64 J
 - (b) 70 J
 - (c) 60 J
 - (d) none of these

4. The echo-receiver of a sonar attached to a ship, receives the echo from the bottom of sea 4 seconds after the ultrasonic waves were sent into the sea. [1]
If the speed of sound in water is 1500 m/s, then what is the depth of the sea? [1]
- (a) 6000 m
 - (b) 3000 m
 - (c) 15000 m
 - (d) 3500 m

Directions: In the given question, a statement of Assertion is given and a corresponding statement of Reason is given just below it. Of the statements, given below, mark the correct answer as:

- (a) Both assertion and reason are true and reason is the correct explanation of assertion.
 - (b) Both assertion and reason are true but reason is not the correct explanation of assertion.
 - (c) Assertion is true but reason is false.
 - (d) Both Assertion and Reason are false.
5. **Assertion :** A wave is a disturbance that moves through a medium when the particles of the medium set neighboring particles into motion.
Reason: A particle of the medium in contact with the vibrating object is first displaced from its equilibrium position and produces a wave. [1]

SECTION:- B

6. Between two objects of masses 16 kg and 4 kg placed 5m apart, where should a third object of mass 1 kg be placed so that net gravitational force on it be zero. [2]

OR

The gravitational force between two objects is F. If the masses of both objects are halved and the distance between them also becomes half, then find the new gravitational force acting between them. Does the gravitational force between them depend on medium between them?

SECTION :- C

7. (a) Write statement of Newton's second laws of motion. Explain Mathematical derivation of Newton's second law of motion.
(b) A bullet of mass 20 gm is horizontally fired with a velocity 150 m/s from a pistol of mass 2kg. What is the recoil velocity of the pistol? [2+1=3]
8. (a) A person has a hearing range from 20 Hz to 20 kHz. What are the typical wavelengths of sound waves in air corresponding to these two frequencies? Take the speed of sound in air as 344 ms⁻¹.
(b) Explain how flaws in a metal block can be detected using ultrasound. [2+1=3]

OR

An observer standing between two cliffs fires a gun. He hears one echo after 1.5 s and another after 2.4 s. If the speed of sound is 340 m/s, find (a) the distance of the observer from the first cliff and (b) distance between the cliffs.

9. (a) Define buoyancy. Name the factor on which buoyant force acting on a body depends.
(b) A cubical body of volume 64 cm^3 is immersed fully into water. Find the buoyant force acting on the body. [2+1=3]

SECTION :- D

10. (a) Define kinetic energy. Derive kinetic energy of a body of mass m .
(b) An engine can pump 3000 kg of water to a vertical height of 45 metre in 1 minute . Calculate the work done by the engine and power delivered by it. [$g = 9.8 \text{ m/s}^2$; Density of water = 10^3 kg/m^3]. [3+2= 5]

SECTION:- E (Case Study types question)

11. When an object is in motion, its position changes with time. So, the quantity that describes how fast is the position changing w.r.t. time and in what direction is given by average velocity. It is defined as the change in position or displacement (Δx) divided by the time interval (Δt) in which that displacement occurs. However, the quantity used to describe the rate of motion over the actual path, is average speed. It defined as the total distance travelled by the object divided by the total time taken. [1+1+2=4]
- (a) A 250 m long train is moving with a uniform velocity of 45 km/h . Find the time taken by the train to cross a bridge of length 750 m .
- (b) A cyclist is moving on a circular track of radius 40 m completes half a revolution in 40 s . what is the average velocity in half revolution (in m/s) ?
- (c) Average speed of a car between points A and B is 20 m/s , between B and C is 15 m/s and between C and D is 10 m/s . What is the average speed between A and D, if the time taken in the mentioned sections is 20s , 10s and 5s , respectively?

OR

- (c) A particle moves in a straight line with a constant acceleration. It changes its velocity from 10 m/s to 20 m/s , while passing through a distance 135 m in t second. Calculate the value of t .

CHEMISTRY

SECTION:- A (1×8=8)

1. As the solid melts to form liquid,
(a) compressibility increases
(b) interparticle force of attraction decreases
(c) interparticle space increases
(d) all of these [1]
2. Which of the following is heterogeneous?
(a) brass
(b) smoke
(c) air
(d) salt solution [1]

3. The atomicity of Sodium Carbonate is
(a) 5
(b) 4
(c) 6
(d) 2 [1]
4. The Latin name of Potassium is
(a) Potash
(b) Pome
(c) Katrium
(d) Kalium [1]
5. Which of the following correctly represents the electronic configuration of Ca atom?
(a) 2,8,10
(b) 2,8,2,8
(c) 2,8,8,2
(d) none of the above [1]
6. Alpha particles are composed of positively charged
(a) hydrogen nuclei
(b) sodium nuclei
(c) aluminum nuclei
(d) helium nuclei [1]
7. An atom with 6 protons and 8 neutrons will have a valency of
(a) 2
(b) 6
(c) 4
(d) 0 [1]
8. **Two statements are given below-one labelled as assertion (A) and the other labelled as reason (R). Select the correct answer to this question from the following codes a, b, c and d.** [1]
(a) Both Assertion and Reason are true and Reason is the correct explanation of Assertion
(b) Both Assertion and Reason are true and Reason is not the correct explanation of Assertion
(c) Assertion is true and Reason is false
(d) Assertion is false and Reason is false

Assertion: Atom is electrically neutral.

Reason : The atom always contains neutrons in its nucleus.

SECTION:- B

[2x1]

9. (a) Explain why does it take more time for wet clothes to dry up on cloudy days?
(b) Covert 10 K to $^{\circ}\text{C}$ and 35 $^{\circ}\text{C}$ to K
- OR**
- (a) Why is ice at 273 K more effective in cooling than water at same temperature?
(b) Mention the two conditions necessary for liquefaction of a gas.

SECTION:- C

[3x2]

10. (a) State 2 reasons to prove that water is a compound and not a mixture of hydrogen and oxygen .
(b) Specify the dispersed phase and dispersion medium of milk of magnesia.
(c) Calculate the concentration of a solution which contains 150 g of salt in 250 g of water.
11. (a) Give the chemical formula of Ammonium sulphate and Calcium chloride.
(b) What will be the mass of CO₂ formed when 6g of carbon is burnt in excess of O₂ ?
(c) Define atomic mass unit.

SECTION:- D

12. From the table below answer the following:-

[1x5]

Element	A	B	C	D	E	F
Electron	10	18	17	10	17	20
Proton	12	18	17	9	17	20
Neutron	12	22	20	10	18	20

Identify a cation, anion, noble gas , isobar and isotope and also give valid reason for your choice.

OR

- (a) State 2 important postulates of Bohr's model of an atom.
(b) Write the electronic configuration of X₁₃ and classify it as a metal / non metal.
(c) Why do isotopes have same chemical property but different physical property?
(d) Name an element which has two valencies.
(e) Which out of Cl and Cl⁻ is more stable and why?

SECTION:- E

[1x4]

Read the below paragraph carefully and answer the following questions :-

13. Our planet 'Earth' is a self sustained unit where biotic and abiotic components together make a perfect place for the survival of life. In recent times, a sudden increase in natural disasters has been observed due to the exploitation of natural resources. This has led to imbalance in our ecosystem caused by phenomena like green house effect, global warming, ozone hole and alarming rise in pollution of air ,water and soil.
- (a) What are the two steps that can be taken to reduce pollution of air ?
(b) Specify two important roles of soil in our life.
(c) Name any two important uses of water to living beings .
(d) Write one essential function performed by the ozone layer

OR

What do you mean by green house effect?

BIOLOGY**SECTION:- A**

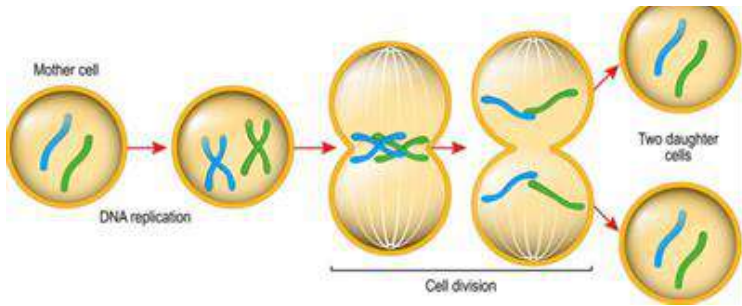
1. Which one of the following nutrients is not available in fertilizers? [1]
- (a) Nitrogen
(b) Phosphorus
(c) Iron
(d) Potassium

2. Which of the following are Indian cattle?

[1]

- (i) *Bos indicus*
 - (ii) *Bos domestica*
 - (iii) *Bos bubalis*
 - (iv) *Bos vulgaris*
- (a) (i) and (iii) (b) (i) and (ii) (c) (ii) and (iii) (d) (iii) and (iv)

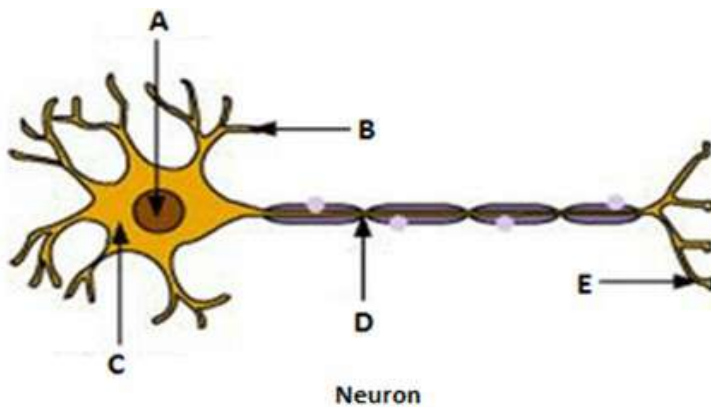
3. Identify the process



- (a) Process of mitosis
- (b) Process of amitosis
- (c) Process of meiosis I
- (d) Process of meiosis II

[1]

4. Given below is a diagram showing the structure of a neuron tissue.



Choose the correct labeling for the parts A, B, C, D and E.

- (a) A - Nucleus; B - Cell body; C - Dendrite; D - Axon; E - Nerve ending.
- (b) A - Nucleus; B - Dendrite; C - Cell body; D - Nerve ending; E - Axon.
- (c) A - Nucleus; B - Axon; C - Cell body; D - Dendrite; E - Nerve ending.
- (d) A - Nucleus; B - Dendrite; C - Cell body; D - Axon; E - Nerve ending

[1]

5. If the tip of the sugarcane plant is removed from the field, even then it keeps on growing in length. It is due to the presence of:

- (a) Cambium
- (b) Apical meristem
- (c) Lateral meristem
- (d) Intercalary meristem

[1]

Directions: In each of the following questions, a statement of Assertion is given and a corresponding statement of Reason is given just below it. Of the statements, given below, mark the correct answer as:

- (a) Both assertion and reason are true and reason is the correct explanation of assertion.
- (b) Both assertion and reason are true but reason is not the correct explanation of assertion.
- (c) Assertion is true but reason is false.
- (d) Both Assertion and Reason are false.

6. **Assertion:** Inter cropping prevents pests.

Reason: Plant pests can be controlled biologically by their natural parasites and pathogens. [1]

7. **Assertion :** The inner lining of intestine has pillar like epithelial cells. [1]

Reason : Columnar epithelium facilitates absorption and secretion.

SECTION:- B

8. (a) Why is endocytosis found in animals only and not in plants ?

(b) What is the importance of pores present on the nuclear membrane? [2]

9. If there is low rainfall in a village throughout the year, mention any two measures which you will suggest to the farmers for better cropping? [2]

10. Explain the significance of the following: [2]

- (a) Hair- like structures on root epidermal cells
- (b) Presence of chemical suberin in cork cells.

11. (a) Mention two advantages of beekeeping?

(b) Write any two desirable traits in bees [2]

SECTION:- C

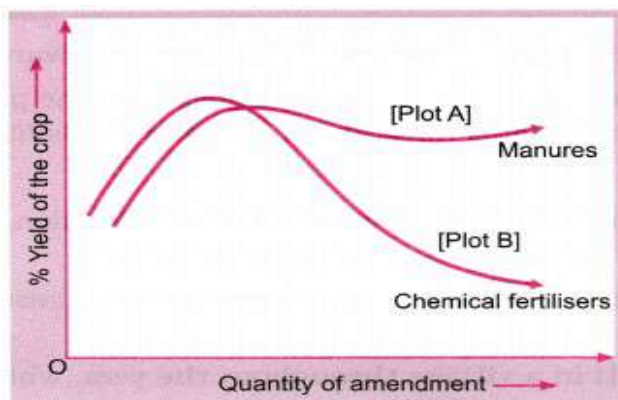
12. Figure shows the two crop fields [plots A and B] have been treated by manures and chemical fertilisers respectively, keeping other environmental factors same.

Observe the graph and answer the following questions.

(i) Why does plot B show sudden increase and then gradual decrease in yield?

(ii) Why is the highest peak in plot A graph slightly delayed?

(iii) What is the reason for the different pattern of the two graphs? [3]



OR

Differentiate between:

- a) Inland fishery and marine fishery
- b) Apiculture and aquaculture
- c) Intercropping and mixed cropping

13. Name the organelles which show the analogy written as under [3]

- (a) Transporting channels of the cell
- (b) Power house of the cell
- (c) Packaging and dispatching unit of the cell
- (d) Digestive bag of the cell
- (e) Storage sacs of the cell
- (f) Kitchen of the cell.

SECTION:- D

14. (a) Draw well labelled diagrams of various types of muscles found in human body. [5]
(b) Differentiate between them on the basis of structure, function and location.

OR

- (a) Draw a well labelled diagram to show the location of meristematic tissues in plant body
- (b) Distinguish between
 - (i) meristematic tissue and permanent tissue.
 - (ii) Simple tissue and complex tissue
 - (iii) Epidermis and epithelium

SECTION: -E

15. Read the text carefully and answer the questions:

Poultry is the rearing of domesticated fowl (chicken), ducks, geese, turkey and some varieties of pigeon for their meat and eggs. Poultry birds are of two types that is broilers and layers. One is specialized meat-producing poultry birds while other is egg-laying poultry birds. The tremendous rise in the availability of poultry products is called Silver Revolution.



- i) What is the meaning of layers regarding poultry?
- ii) Enlist the name of Indigenous and Exotic breed of poultry birds.
- iii) Distinguish between layers and broilers.

OR

iii) Mention two desirable traits required to develop new varieties in poultry farming

[4]



DELHI PUBLIC SCHOOL

SAIL TOWNSHIP, RANCHI

ANNUAL EXAMINATION (2022-23)

Class - IX
Time - 3 Hour

Subject - Hindi
Maximum Marks- 80

सामान्य निर्देश :-

- (i) इस प्रश्न-पत्र में दो खंड हैं – खंड 'अ' और 'ब'।
- (ii) खंड 'अ' में उपप्रश्नों सहित 45 वस्तुपरक प्रश्न पूछे गए हैं। दिए गए निर्देशों का पालन करते हुए कुल 40 प्रश्नों के उत्तर दीजिए।
- (iii) खंड 'ब' में वर्णनात्मक प्रश्न पूछे गए हैं, आंतरिक विकल्प भी दिए गए हैं।
- (iv) निर्देशों को बहुत सावधानी से पढ़िए और उनका पालन कीजिए।
- (v) दोनों खंडों में कुल 19 प्रश्न हैं। दोनों खंडों के प्रश्नों के उत्तर देना अनिवार्य है।
- (vi) यथासंभव दोनों खंडों के प्रश्नों के उत्तर क्रमशः लिखिए।

खंड – 'अ' (वस्तुपरक प्रश्न)

प्रश्न 1. निम्नलिखित गद्यांश को ध्यानपूर्वक पढ़कर इसके आधार पर सर्वाधिक उपयुक्त उत्तर वाले विकल्प चुनकर लिखिए – (1X5=5)

जितनी अनिच्छा से हम सलाह को स्वीकार करते हैं, उतनी अनिच्छा से किसी अन्य को नहीं। सलाह देने वालों के बारे में हम सोचते हैं कि वह हमारी समझ को अपमान की दृष्टि से देख रहा है अथवा हमें बच्चा या बुद्धू मानकर व्यवहार कर रहा है। ऐसे अवसरों पर हमारी भलाई के लिए जो उत्साह दिखाया जाता है, उसे हम एक पूर्व धारणा या धृष्टता मानते हैं। इसकी सच्चाई यह है कि जो सलाह देने का बहाना करता है; वह इसी कारण से हमारे ऊपर अपनी श्रेष्ठता स्थापित करता है। इसके अतिरिक्त कोई और कारण नहीं हो सकता किंतु अपने से हमारी तुलना करते हुए, वह हमारे आचरण अथवा समझदारी में कोई दोष देखता है। इन कारणों से, सलाह को स्वीकार्य बनाने से कठिन कोई कला नहीं है और वास्तव में प्राचीन और आधुनिक दोनों युग के लेखकों ने इस कला में जितनी दक्षता प्राप्त की है, उसी आधार पर स्वयं को एक-दूसरे से अधिक विशिष्ट प्रमाणित किया है। इस कटु पक्ष को रोचक बनाने के कितने उपाय काम में लाए गए हैं? कुछ सर्वोत्तम शब्दों में अपनी शिक्षा हम तक पहुँचाते हैं, कुछ अत्यंत सुसंगत ढंग से, कुछ वाक्वातुर्य से और अन्य छोटे मुहावरों में। मैं सोचता हूँ कि सलाह देने के विभिन्न उपायों में जो सबको अधिक प्रसन्नता देता है, वह गल्प है, वह चाहे किसी भी रूप में आए। यदि हम इस रूप में शिक्षा देने अथवा सलाह देने की बात सोचते हैं तो वह अन्य सबसे बेहतर है क्योंकि सबसे कम झटका लगता है।

(1) गद्यांश के अनुसार सलाह को किस दृष्टि से देखा जाता है?

- | | |
|----------------------------|--------------------------|
| (क) अपमान की दृष्टि से | (ख) सम्मान की दृष्टि से |
| (ग) स्वीकार्य की दृष्टि से | (घ) प्रशंसा की दृष्टि से |

(2) किस कला को सबसे कठिन कला कहा गया है?

- (क) दूसरों को अपना बनाने की कला को
- (ख) किसी की सलाह को स्वीकार करने की कला को
- (ग) किसी सत्य को स्वीकार करने की कला को
- (घ) किसी की सलाह को स्वीकार न करने की कला को

(3) लेखक किस रूप में सलाह देने को बेहतर मानता है?

(क) मुहावरों के रूप में

(ख) सुसंगत रूप में

(ग) गल्प के रूप में

(घ) सलाह के रूप में

(4) प्राचीन और आधुनिक युग के लेखकों ने किस कला में दक्षता प्राप्त की है?

(क) सलाह को स्वीकारने में

(ख) सच्चाई को न स्वीकारने में

(ग) सलाह और सच्चाई को स्वीकार करने में

(घ) सलाह और सच्चाई को न स्वीकार करने में

(5) निम्नलिखित कथन और कारण को ध्यानपूर्वक पढ़िए तत्पश्चात् दिए गए विकल्पों में से उचित विकल्प छोटकर उत्तर दीजिए।

कथन (A) : हम सलाह को स्वेच्छा से स्वीकार करते हैं।

कथन (R) : सलाह देने वाला हमें अपमान की दृष्टि से देखता प्रतीत होता है।

(क) कथन (A) सही है कारण (R) गलत है।

(ख) कथन (A) सही नहीं है, कारण (R) सही है।

(ग) कथन (A) सही है किंतु कारण (R) उसकी व्याख्या नहीं करता है।

(घ) कथन (A) सही है कारण (R) सही है।

प्रश्न 2. निम्नलिखित गद्यांश को ध्यानपूर्वक पढ़कर इसके आधार पर सर्वाधिक उपयुक्त उत्तर वाले विकल्प चुनकर लिखिए – (1X5=5)

‘सत्य’ एक धर्म है। इसकी महिमा से सभी परिचित हैं। यह आनंद देता है, संतोष देता है, न्याय देता है और इसका पालन करने वाले व्यक्ति को खरा सोना बना देता है। सत्यवादी राजा हरिश्चंद्र और उससे प्रभावित महात्मा गांधी—दोनों ही व्यक्तित्व सत्य के बल पर सदा के लिए अमर हो गए। ‘सत्य’ हमारी वाणी में ऐसी शक्ति और बल देता है कि उसका लोहा सबको मानना पड़ता है। सच बोलने वाले को कभी बातें बनाने या बदलने की आवश्यकता नहीं पड़ती। वास्तव में झूठ व्यक्ति को कहीं का नहीं छोड़ता। झूठे व्यक्ति की कथनी और करनी का अंतर सबको आसानी से पकड़ में आ जाता है। कभी – कभी सत्य का मार्ग कँटीला होता है, परंतु झूठ की भाँति पापमय नहीं होता। सत्य की ताकत के आगे झूठ के पाँव उखड़ ही जाते हैं। सत्य निर्भीक होता है परंतु झूठ भीरु। सत्य दृढ़ होता है जबकि झूठ कायर और कमजोर। सत्य में कपट नहीं है, वहीं झूठ में कपट का ही मायाजाल है। सत्य के रास्ते पर चलते हुए राजा हरिश्चंद्र ने अपना राजपाट खो दिया था, राजा दशरथ ने अपने प्राण गँवा दिए थे, धर्मराज युधिष्ठिर ने आधा झूठ बोलकर नरक के दर्शन किए थे। अपने वचनों तथा सत्य पर अडिग रहने वाले इन महापुरुषों का हम आज भी स्मरण करते हैं।

1) गद्यांश के अनुसार किसकी महिमा से सभी परिचित हैं?

(क) धर्म की

(ख) सत्य की

(ग) असत्य की

(घ) न्याय की

(2) सत्य का पालन करने वाला व्यक्ति क्या बन जाता है?

(क) खोटा सिक्का

(ख) भीरु

(ग) घर का जोगी

(घ) खरा सोना

(3) कभी—कभी सत्य का मार्ग कैसा होता है?

(क) कँटीला

(ख) पापमय

(ग) हिंसक

(घ) कल्याणकारी

(4) झूठ के पाँव किसके आगे उखड़ जाते हैं?

(क) लोभ के आगे

(ख) सत्य की ताकत के आगे

(ग) धोखे के आगे

(घ) परमार्थ के आगे

(5) धर्मराज युधिष्ठिर ने आधा झूठ बोलकर कहाँ के दर्शन किए?

(क) स्वर्ग के

(ख) मृत्युलोक के

(ग) नरक के

(घ) इनमें से कोई नहीं

प्रश्न 3. निर्देशानुसार 'शब्द और पद' पर आधारित बहुविकल्पीय प्रश्नों के उत्तर लिखिए –

(1X2=2)

(1) वाक्य में प्रयुक्त शब्द क्या कहलाते हैं?

(क) पदबंध (ख) संज्ञा (ग) पद (घ) सर्वनाम

(2) ----- व्याकरण के नियमों से परे होते हैं।

(क) शब्द (ख) पद (ग) विशेषण (घ) सर्वनाम

प्रश्न 4. निर्देशानुसार 'अनुस्वार और अनुनासिक' पर आधारित तीन बहुविकल्पीय प्रश्नों में से किन्हीं दो प्रश्नों के उत्तर लिखिए – (1X2=2)

(1) अनुस्वार का उचित प्रयोग किस शब्द में है?

(क) चीटी (ख) चींटी (ग) चींटी (घ) चीटी

(2) उचित अनुनासिक शब्द का चयन करें –

(क) आंचल (ख) आचल (ग) आचल (घ) आंचल

(3) उचित अनुनासिक शब्द का चयन करें –

(क) जहाँ (ख) जँहा (ग) जहा (घ) जहां

प्रश्न 5. निर्देशानुसार 'उपसर्ग और प्रत्यय' पर आधारित पाँच बहुविकल्पीय प्रश्नों में से किन्हीं चार प्रश्नों के उत्तर लिखिए – (1X4=4)

(1) 'संशोधन' शब्द में कौन-सा उपसर्ग है?

(क) संश (ख) स (ग) सम् (घ) संशो

(2) 'अतिरिक्त' शब्द में मूल शब्द है –

(क) अति (ख) रिक्त (ग) अ (घ) क्त

(3) 'हर्षित' शब्द में कौन-सा प्रत्यय है?

(क) हर्ष (ख) ईत (ग) त (घ) इत

(4) 'सामाजिक' शब्द में मूल शब्द कौन-सा है?

(क) समाज (ख) इक (ग) सा (घ) जिक

(5) 'चढ़ाई' शब्द में कौन-सा प्रत्यय है?

(क) आई (ख) ई (ग) चढ़ (घ) चढ़ा

प्रश्न 6. निर्देशानुसार 'संधि' पर आधारित चार बहुविकल्पीय प्रश्नों में से किन्हीं तीन प्रश्नों के उत्तर लिखिए –

(1X3=3)

(1) 'अत्याचार' शब्द का संधि-विच्छेद होगा –

(क) अति + अचार (ख) अति + आचार (ग) अत्या + चार (घ) अत्य + अचार

(2) 'तदैव' शब्द का संधि-विच्छेद होगा –

(क) त + दैव (ख) तदै + व (ग) तदा + एव (घ) त + दाएव

(3) 'कमल + ईश्वर' में संधि से निर्मित शब्द होगा –

(क) कमलीश्वर (ख) कमेश्वर (ग) कमलेश्वर (घ) कमलेश्वर

(4) 'सु + अस्ति' में संधि से निर्मित शब्द होगा –

(क) स्वस्ति (ख) सुअस्ति (ग) सूअस्ति (घ) सुयस्ति

प्रश्न 7. निर्देशानुसार 'विराम-चिह्न' पर आधारित चार बहुविकल्पीय प्रश्नों में से किन्हीं तीन प्रश्नों के उत्तर लिखिए –
(1X3=3)

(1) निम्नलिखित में अल्प विराम-चिह्न कौन-सा है?

(क) , (ख) ; (ग) । (घ) !

(2) तुम क्यों नहीं चढ़ते हो? – इस वाक्य में किस विराम-चिह्न का प्रयोग हुआ है?

(क) पूर्ण विराम (ख) अल्पविराम (ग) उद्धरण चिह्न (घ) प्रश्नवाचक चिह्न

(3) विस्मय, घृणा, हर्ष, शोक आदि प्रकट करने वाले शब्दों के बाद किस विराम-चिह्न का प्रयोग किया जाता है?

(क) निर्देशक चिह्न (ख) विस्मयादिबोधक चिह्न
(ग) लाघव चिह्न (घ) किसी विराम-चिह्न का प्रयोग नहीं होता

(4) निम्नलिखित में अर्द्धविराम-चिह्न कौन-सा है?

(क) । (ख) ! (ग) , (घ) ;

प्रश्न 8. निर्देशानुसार 'अर्थ की दृष्टि से वाक्य-भेद' पर आधारित तीन बहुविकल्पीय प्रश्नों में से किन्हीं दो प्रश्नों के उत्तर लिखिए –
(1X2=2)

(1) ओह! आज बहुत गर्मी है। – अर्थ की दृष्टि से वाक्य-भेद होगा –

(क) विधानवाचक (ख) निषेधवाचक (ग) प्रश्नवाचक (घ) विस्मयादिबोधक

(2) ईश्वर तुम्हें दीर्घायु करे। – अर्थ की दृष्टि से वाक्य-भेद होगा –

(क) इच्छावाचक (ख) आज्ञावाचक (ग) संदेहवाचक (घ) संकेतवाचक

(3) यदि दवाई खाओगे तो जल्दी अच्छे हो जाओगे। – अर्थ की दृष्टि से वाक्य-भेद होगा –

(क) आज्ञावाचक (ख) इच्छावाचक (ग) संकेतवाचक (घ) संदेहवाचक

प्रश्न 9. निम्नलिखित पद्यांश को पढ़कर पूछे गए प्रश्नों के उत्तर के लिए सही विकल्प का चयन कीजिए –
(1X5=5)

ऐसी लाल तुझ बिनु कउनु करै
गरीब निवाजु गुसईआ मेरा माथै छत्रु धरै।।
जाकी छोति जगत कउ लागै ता पर तुहीं ढरै।
नीचहु ऊच करै मेरा गोबिंदु काहू ते न डरै।।
नामदेव कबीरू तिलोचनु सधना सैनु तरै।
कहि रविदासु सुनहु रे संतहु हरिजीउ ते सभै सरै।।

(1) पद्यांश में 'लाल' पद का अर्थ क्या है?

(क) स्वामी/ईश्वर (ख) रैदास (ग) संसार (घ) ऐसा

(2) 'गरीब निवाजु' किसे कहा गया है?

(क) रैदास को (ख) ईश्वर को (ग) कबीर को (घ) संतों को

(3) 'नीचहु ऊच करै' – पंक्ति का क्या अर्थ है?

(क) छोटा होना (ख) बात न मानना
(ग) नीच को भी ऊँची पदवी प्रदान करता है (घ) नीचे झुक जाना

(4) 'छोति' पद का क्या अर्थ है?

(क) जिसका (ख) जगत (ग) छुआछूत/अस्पृश्यता (घ) तुम

(5) पद्यांश के अनुसार 'सधना' कौन हैं?

(क) एक संत

(ख) रविदास

(ग) ईश्वर

(घ) कबीर

प्रश्न 10. निम्नलिखित प्रश्नों के उत्तर के लिए सही विकल्प का चयन कीजिए –

(1X2=2)

(1) रैदास ईश्वर को मोती और स्वयं को क्या मानते हैं?

(क) मोर

(ख) चंदन

(ग) धागा

(घ) दीपक

(2) रहीम के अनुसार विपत्ति आने पर लोग किस स्थान पर जाते हैं?

(क) चित्रकूट

(ख) अयोध्या

(ग) काशी

(घ) प्रयाग

प्रश्न 11. निम्नलिखित गद्यांश को पढ़कर पूछे गए प्रश्नों के उत्तर के लिए सही विकल्प का चयन कीजिए –

(1X5=5)

गांधी जी के पास आने के पहले अपनी विद्यार्थी अवस्था में महादेव ने सरकार के अनुवाद-विभाग में नौकरी की थी। नरहरि भाई उनके जिगरी दोस्त थे। दोनों एक साथ वकालत पढ़े थे। दोनों ने अहमदाबाद में वकालत भी साथ-साथ ही शुरू की थी। इस पेशे में आमतौर पर स्याह को सफ़ेद और सफ़ेद को स्याह करना होता है। साहित्य और संस्कार के साथ इसका कोई संबंध नहीं रहता। लेकिन इन दोनों ने तो उसी समय से टैगोर, शरदचंद्र आदि के साहित्य को उलटना-पुलटना शुरू कर दिया था। 'चित्रांगदा' कच-देवयानी की कथा पर टैगोर द्वारा रचित 'विदाई का अभिशाप' शीर्षक नाटिका, 'शरद बाबू की कहानियाँ' आदि अनुवाद उस समय की उनकी साहित्यिक गतिविधियों की देन हैं।

(1) महादेव के जिगरी दोस्त कौन थे?

(क) गांधी जी

(ख) टैगोर

(ग) शरदचंद्र

(घ) नरहरि

(2) स्याह को सफ़ेद और सफ़ेद को स्याह किस पेशे में करना होता है?

(क) लेखन में

(ख) वकालत में

(ग) अनुवाद करने में

(घ) सरकारी सेवा में

(3) सरकार के अनुवाद-विभाग में किसने नौकरी की थी?

(क) महादेव ने

(ख) नरहरि ने

(ग) विद्यार्थी ने

(घ) गांधी जी ने

(4) 'विदाई का अभिशाप' क्या है?

(क) एक कहानी

(ख) नाटिका

(ग) शरद बाबू की आत्मकथा

(घ) नरहरि भाई की आत्मकथा

(5) साहित्य और संस्कार के साथ किसका कोई संबंध नहीं रहता है?

(क) वकालत का

(ख) अनुवाद-विभाग का

(ग) महादेव का

(घ) नरहरि का

प्रश्न 12. निम्नलिखित प्रश्नों के उत्तर देने के लिए उचित विकल्प का चयन कीजिए –

(1X2=2)

(1) किस तथ्य / बात का जाग्रत भान होने पर मनुष्य कभी कीचड़ का तिरस्कार न करता?

(क) कवियों की युक्तिशून्य वृत्ति का

(ख) मोती की मातृश्री को गले में नहीं बाँधते

(ग) हमारा अन्न कीचड़ में से ही पैदा होता है

(घ) लोगों को पंक शब्द घृणास्पद लगता है

(2) एवरेस्ट पर कौन बिना ऑक्सीजन के चढ़ने वाला था?

(क) अंगदोरजी

(ख) बर्चेंद्री पाल

(ग) लोपसांग

(घ) ल्हाटू

खंड – 'ब' (वर्णनात्मक प्रश्न)

प्रश्न 13. पठित पाठों के आधार पर निम्नलिखित प्रश्नों में से किन्हीं दो प्रश्नों के उत्तर लगभग 60 शब्दों में लिखिए –
(3X2=6)

- (क) भगवाना की मृत्यु उसके गरीब परिवार के लिए दोहरी मार थी। स्पष्ट कीजिए।
(ख) रामन् की खोज 'रामन प्रभाव' क्या है? स्पष्ट कीजिए।
(ग) अतिथि के आने पर जिस ऊष्मा के साथ उसका स्वागत किया जाता है वह ऊष्मा उसके कुछ दिन ठहर जाने पर कम क्यों हो जाती है? सकारण उत्तर लिखिए।

प्रश्न 14. पठित कविताओं के आधार पर निम्नलिखित प्रश्नों में से किन्हीं दो प्रश्नों के उत्तर लगभग 60 शब्दों में लिखिए –
(3X2=6)

- (क) 'खुशबू रचते हैं हाथ' कविता का प्रतिपाद्य लिखिए।
(ख) 'अग्नि पथ' कविता के अनुसार मनुष्य को किस बात की शपथ लेनी चाहिए और क्यों?
(ग) 'नए इलाके में' कविता के कवि ने शहरों की किस विडंबना की ओर संकेत किया है?

प्रश्न 15. 'संचयन' के पठित पाठों के आधार पर निम्नलिखित प्रश्नों में से किन्हीं दो प्रश्नों के उत्तर लगभग 60 शब्दों में लिखिए –
(3X2=6)

- (क) गिल्लू किस प्रकार एक परिचारिका की भूमिका निभा रहा था?
(ख) कल्लू कुम्हार कैलाश क्यों नहीं जा सका?
(ग) लेखक धर्मवीर भारती ने पुस्तक-संग्रह करना किस प्रकार आरंभ किया?

प्रश्न 16. निम्नलिखित विषयों में से किसी एक विषय पर संकेत-बिंदुओं के आधार पर लगभग 120 शब्दों में अनुच्छेद लिखिए –
(6X1=6)

(1) विद्यार्थी – जीवन और चरित्र – निर्माण

- संपूर्ण जीवन की आधारशिला
- चरित्र – निर्माण की आवश्यकता
- देश व समाज के लिए उपयोगी

(2) भारतीय किसान के कष्ट

- अन्नदाता की कठिनाई
- कठोर दिनचर्या
- सुधार के उपाय

(3) संघर्ष की परिणति – विजय

- संघर्षशील जीवन
- चुनौती एवं संघर्ष से लाभ
- विजय की खुशी

प्रश्न 17. अपने छोटे भाई को जीवन में सफलता की प्राप्ति हेतु कठिन परिश्रम करने का सुझाव देते हुए लगभग 120 शब्दों में पत्र लिखिए।
(6X1=6)

अथवा

आपके चाचा जी ने आपको जन्मदिन का उपहार भेजा है। उपहार भेजने के लिए धन्यवाद देते हुए उन्हें लगभग 120 शब्दों में पत्र लिखिए।

प्रश्न 18. निम्नांकित चित्र में दिखाई दे रहे दृश्य/घटना का कल्पनाशक्ति से लगभग 100 शब्दों में वर्णन कीजिए।
(5X1=5)



प्रश्न 19. रेलगाड़ी के डिब्बे में बैठे दो अपरिचित व्यक्तियों में हुई बातचीत को लगभग 100 शब्दों में संवाद के रूप में लिखिए।
(5X1=5)

अथवा

दो महिलाओं के मध्य मच्छरों के बढ़ते प्रकोप विषय पर लगभग 100 शब्दों में संवाद लिखिए।



DELHI PUBLIC SCHOOL

SAIL TOWNSHIP, RANCHI

ANNUAL EXAMINATION (2022-23)

Class - IX
Time - 3 Hours

Subject - Sanskrit
Maximum Marks - 80

खण्ड: 'क'

अपठित-अवबोधनम् {10 अंकाः}

प्रश्न 1 अधोलिखितं गद्यांशं पठित्वा निर्देशानुसारम् उत्तरत।

एकदा एकः वैदेशिकः प्रथम राष्ट्रपतेः श्रीराजेन्द्रप्रसादस्य गृहं प्राप्तवान्। राष्ट्रपतेः परिचारकः तं आतिथ्यगृहे प्रतीक्षितुम् अकथयत् तम् असूचयत् च यद् राष्ट्रपतिमहोदयः सम्प्रति पूजां करोति। स अतिथिः ज्ञातुम् ऐच्छत् यद् राष्ट्रपतिः कथं करोति पूजाम्? सङ्कोचं कुर्वन् अपि स अन्तः पूजागृहं प्रविष्टः। राष्ट्रपतेः समक्षं विद्यमानं मृत्पिण्डं सोऽवन्दत श्रद्धया च तत्र उपाविशत्। पूजां परिसमाप्य राष्ट्रपतिमहोदयः पूजागृहे स्थितं तं दृष्ट्वा प्रसन्नः अभवत्, ससम्मानं तम् अन्तः अनयत्। आगन्तुकस्य ललाटे विद्यमानं भावं दृष्ट्वा श्रीराजेन्द्रप्रसादमहोदयः तस्य कौतूहलं विज्ञाय तस्मै सम्बोधयत्- एतद् मृत्पिण्डं भारतस्य भूम्याः प्रतीकम् अस्ति। एतेन मृत्पिण्डेन एव भारतीयाः महतीम् अध्यात्मिकां सम्पदं प्राप्नुवन्ति। अत एव वयं मृत्तिकायाः कणेषु ईश्वरस्य दर्शनमपि कुर्मः। अस्माकं विचारे तु मानवेषु, पशुपक्षिषु, पाषाणेषु, वृक्षादिषु किं वा अचेतनेषु अपि ईश्वरस्य सत्ता अस्ति।

1 एकपदेन उत्तरत।

{ $\frac{1}{2} \times 4 = 2$ }

- क. कः श्रीराजेन्द्रप्रसादस्य गृहं प्राप्तवान्?
ख. भारतभूम्याः प्रतीकम् किम् अस्ति?
ग. वैदेशिकः कस्य गृहं प्राप्तवान्?
घ. राष्ट्रपतेः परिचारकः कम् आतिथ्यगृहे प्रतीक्षितुम् अकथयत्?

2 पूर्णवाक्येन उत्तरत।

{ $2 \times 2 = 4$ }

- क. राष्ट्रपतिमहोदयः आगन्तुकं कुत्र दृष्ट्वा प्रसन्नः अभवत्?
ख. राजेन्द्रप्रसादमहोदयः आगन्तुकस्य कौतूहलं विज्ञाय तस्मै किं सम्बोधयत्?

3 गद्यांशस्य उचितं शीर्षकम् लिखत।

{ $1 \times 1 = 1$ }

4 निर्देशानुसारम् उत्तरत।

{ $1 \times 3 = 3$ }

क. 'प्राप्नुवन्ति' अस्याः क्रियायाः कर्तृपदं किम्?

{अ} मृत्पिण्डेन {ब} भारतीयाः {स} महतीम् {द} कौतूहलम्

ख. 'भावम्' इति विशेष्यस्य अत्र किं विशेषणम् वर्तते?

{अ} महतीम् {ब} सम्पदम् {स} ललाटे {द} विद्यमानम्

ग. 'चिह्नम्' अस्य कः पर्यायः अत्र प्रयुक्तः?

{अ} मन्तिगण्टम {ब} भारतीयाः {स} पत्नीकम् {द} गण्टम

खण्ड: 'ख'

रचनात्मक-कार्यम् {15 अंकाः}

प्रश्न 2 भवान् सुधांशुः मधुबनीनगरम् अध्ययनार्थम् आगतः । स्वविद्यालयस्य वर्णनं कुर्वन् पटनानगरस्थितं मित्रं हिमांशुं प्रति लिखितं पत्रं मञ्जूषायाः पदैः पूरयित्वा पुनः उत्तरपुस्तिकायां लिखत । {½x10=5}

दिनांकः -----

मधुबनीनगरतः

पतञ्जलिसदनम्

प्रियमित्र (1) -----!

सप्रेम (2) ----- ।

वयं सकुशलं मधुबनीनगरं प्राप्ताः । अत्र मया गृहस्य (3) ----- एव विद्यापतिपब्लिकविद्यालये प्रवेशः लब्धः । अस्मिन् विद्यालये शिक्षायाः माध्यमं तु (4) ----- अस्ति, तथापि संस्कृतपाठनस्य अपि (5) ----- अस्ति । अतिविशालः अयं विद्यालयः अस्य विद्यालयस्य एकं तरणतालं तथा च पाठ्येतरक्रियाणाम् (6) ----- कार्यशालाः सन्ति । अत्रत्याः अध्यापकाः सुयोग्याः स्नेहशीलाः च सन्ति । (7) ----- अपि अति विनम्रः कर्मठः च । अहम् अत्र (8) ----- लब्धा अति गौरवम् अनुभवामि ।

गृहे सर्वेभ्यः मम (9) ----- प्रणामाः ।

तव अभिन्नहृदयः

(10) -----

मञ्जूषा

समीपे, सुव्यवस्था, यथोचितम्, प्रधानाचार्यः, सुधांशुः, नमोनमः, हिमांशो, आंग्लभाषा, प्रशिक्षणार्थम्, प्रवेशम्

प्रश्न 3 अधोदत्तं चित्रं दृष्ट्वा मञ्जूषातः शब्दं चित्वा पञ्च वाक्यानि रचयत ।

{1x5=5}



मञ्जूषा

गृहस्य, पितामहः, गृहे, पितामही, नमति, दुग्धम्, आनयति, जनकः, समाचारपत्रम्, क्रीडनकेन, बालः, माता,

अथवा

'प्रातः भ्रमणम्' इति विषयम् अधिकृत्य एकम् अनुच्छेदं लिखत ।

मञ्जूषा

प्रातःकालः, मन्दः, पवनः, शीतलः, मनोहराणि दृश्यानि, सर्वत्र, सर्वे, पुष्पाणि, बालकाः, उद्यानस्य, क्रीडन्ति, भ्रमन्ति ।

प्रश्न 4 अधोलिखितानि वाक्यानि संस्कृत भाषायाम् अनुवादम् कृत्वा लिखत । (केचन पंच)

{ 1x5=5 }

- क. संतोष सबसे बड़ा सुख है।
ख. तुम सभी कलम से लिखो।
ग. वह गाँव की ओर जाता है।
घ. वन में पशु इधर-उधर घूमते हैं।
ङ. महात्मा गांधी पोरबंदर में जन्मे थे।
च. संस्कृत सभी भाषाओं की माता है।
छ. माता-पिता-आचार्य की सेवा करनी चाहिए।

खण्ड: 'ग'

अनुप्रयुक्त-व्याकरणम् {25 अंकाः}

प्रश्न 5 अधोलिखितानां पदानां सन्धिं सन्धिविच्छेदं वा कृत्वा लिखत ।

{ 1x4=4 }

क. तस्य चक्षुषी नीलोत्पलम् इव स्तः ।

{अ} नीलो + उत्पलम् {ब} नीलः + उत्पलम् {स} नील + ओत्पलम् {द} नील + उत्पलम्

ख. एकदा युधिष्ठिरः वने पिपासाकुलः अभवत् ।

{अ} पिपासा + आकुलः {ब} पिपासुः + आकुलः {स} पिपासो + आकुलः {द} पिपासः + आकुलः

ग. किञ्चित् कालात् + अनन्तरम् एको विचित्रः काकः आगतः ।

{अ} कालादनन्तरम् {ब} कालादनन्तरम् {स} कालातनन्तरम् {द} कालाजनन्तरम्

घ. देवर्षिः नारदः सदैव विष्णोः यशः + गानं करोति ।

{अ} यशोगानम् {ब} यशागानम् {स} यशगानम् {द} यशगानम्

प्रश्न 6 अधोलिखितानि वाक्यानि उचित शब्दरूपेण पूरयित्वा लिखत । (केचन चत्वारः)

{ 1x4=4 }

क. अवकर-क्षेपणेन ----- जलं प्रदूषितं भवति ।

{अ} नदीनाम् {ब} नदीनम् {स} नदीम् {द} नदीना

ख. ----- अनेकानि सुन्दराणि पुष्पाणि सन्ति ।

{अ} वाटिकायाम् {ब} वाटिक्याम् {स} वाटिकाया {द} वाटिकायै

ग. वसन्त-ऋतौ लतायाः ----- पतन्ति ।

{अ} पत्रम् {ब} पत्रे {स} पत्राणि {द} पत्राः

घ. यः श्रमेण पठति ----- एव साफल्यं लभते ।

{अ} तः {ब} ते {स} सा {द} सः

ङ. ----- आज्ञा सदा पालनीया ।

{अ} गुरौ {ब} गुरवे {स} गुरोः {द} गुरुम्

प्रश्न 7 अधोलिखितानि वाक्यानि उचित धातुरूपेण पूरयित्वा लिखत। (केचन चत्वारः)

{1x4=4}

क. बालाः कक्षायाम् उच्चैः न ----- ।

{अ} वदेत् {ब} वदेताम् {स} वदेः {द} वदेयुः

ख. त्वम् प्रथमं अम्बाम् ----- ।

{अ} पश्य {ब} पश्यतम् {स} पश्यताम् {द} पश्यतु

ग. उद्याने अनेके बालकाः बालिकाः च ----- ।

{अ} अस्ति {ब} सन्ति {स} स्तः {द} अस्मि

घ. भो छात्राः! यूयम् दीनजनान् ----- ।

{अ} सेवध्वे {ब} सेवस्व {स} सेवते {द} सेवेते

ङ. परोपकारिणः जनाः सदा यशकीर्तिम् ----- ।

{अ} लभते {ब} लभेते {स} लभन्ते {द} लभसे

प्रश्न 8 अधोलिखितानि वाक्यानि उचित विकल्पेभ्यः पूरयित्वा लिखत। (केचन चत्वारः)

{1x4=4}

क. ----- समयया आम्रवृक्षाः सन्ति ।

{अ} तडागम् {ब} तडागेन {स} तडागाय {द} तडागात्

ख. ----- बहिः बहवः जनाः सन्ति ।

{अ} नगरात् {ब} नगरम् {स} नगरस्य {द} नगरेण

ग. यः परेभ्यः सर्वम् अर्पयति तस्मै ----- नमः ।

{अ} तरुम् {ब} तरुणा {स} तरवे {द} तरोः

घ. ----- प्रति को न कृतज्ञो वर्तते ।

{अ} देशः {ब} देशाय {स} देशस्य {द} देशम्

ङ. ----- अधः हिन्दमहा-सागरः वर्तते ।

{अ} भारतस्य {ब} भारतम् {स} भारतेन {द} भारताय

प्रश्न 9 अधोलिखितानि रेखांकितानि पदानि आधृत्य प्रकृतिप्रत्ययं उचित विकल्पेभ्यः चित्वा लिखत।

{1x3=3}

क. ऋषिः क्रुद्धः भूत्वा सिंहम् अपश्यत् ।

{अ} भू + क्तवतु {ब} भू + ल्यप् {स} भू + क्त {द} भू + क्त्वा

ख. गम् + शतृ बालकः कुत्रापि न पश्यति ।

{अ} गच्छत् {ब} गच्छन्ती {स} गच्छन् {द} गच्छन्तौ

ग. वर्षाम् दृष्ट्वा मुद् + शानच् बालाः नृत्यन्ति ।

{अ} मोदमानाः {ब} मोदमाने {स} मोदमाना {द} मोदमानम्

प्रश्न 10 अधोलिखितेषु वाक्येषु अंकानां स्थाने संख्यावाचक विशेषणानि प्रयुज्य उत्तराणि लिखत। {1/2X4=2}

क. विष्णोः (10) ----- अवताराः प्रसिद्धाः सन्ति।

ख. एकेन छात्रेण वार्षिक परीक्षायाम् (80) ----- अंकाः लब्धः।

ग. सर्वेषाम् वदने ----- नासिका भवति।

{अ} एकस्यै {ब} एका {स} एकस्याम् {द} एकस्याः

घ. श्वः अस्माकं ----- भगिन्यः आगमिष्यन्ति।

{अ} त्रीणि {ब} त्रयः {स} त्रयाणाम् {द} तिस्रः

प्रश्न 11 विकल्पेभ्यः उचितं पदं चित्वा रिक्तस्थानानि पूरयित्वा लिखत। {1/2X4=2}

क. हे प्रभो! मयि -----।

{अ} प्रसीदतु {ब} प्रसीदताम् {स} प्रसीदन्तु {द} प्रसीदः

ख. सभायाम् विद्वांसः एव -----।

{अ} सुशोभते {ब} सुशोभते {स} सुशोभन्ते {द} सुशोभसे

ग. नागरिकाः एव स्वदेशं -----।

{अ} उन्नयति {ब} उन्नयतः {स} उन्नयन्ति {द} उन्नयसि

घ. गुरुः आश्रमं -----।

{अ} प्रविशसि {ब} प्रविशथः {स} प्रविशथ {द} प्रविशति

प्रश्न 12 अधोलिखितं वाक्यं मंजूषातः अव्यय पदानि चित्वा रिक्तस्थानानि पूरयत। (केचन चत्वारः) {1/2X4=2}

क. तस्मिन् गृहे एकः ----- जनः निवसति।

ख. अस्माकं वार्षिकोत्सवे मम पितामही ----- आगच्छत्।

ग. ----- संस्कृत-व्याकरण-प्रणेता पाणिनिः मुनिः अभवत्।

घ. भवती अधुना ----- आगच्छति?

ङ. यदा कृष्णः अत्र आगच्छत् ----- वृष्टिः प्रारभत्।

मंजूषा

तदा, पुरा, कुतः, एव, अपि।

खण्डः 'घ'

पठित-अवबोधनम् {30 अंकाः}

प्रश्न 13 अधोलिखितं गद्यांशं पठित्वा प्रश्नानाम् उत्तराणि लिखत।

चिरकाल भवने चित्रविचित्रवस्तूनि सज्जितानि दृष्ट्वा सा बालिका विस्मयं गता। श्रान्तां तां विलोक्य काकः अवदत्-
पूर्वं लघुप्रातराशः क्रियताम् वद त्वं स्वर्णस्थाल्या भोजनं करिष्यसि किं वा रजतस्थाल्याम् उत ताम्रस्थाल्याम्? "बालिका
अवदत्-"ताम्रस्थाल्याम् एवं अहं निर्धना भोजनं करिष्यामि। तदा सा आचाश्चर्यचकिता संजाता यदा स्वर्णकाकेन
स्वर्णस्थाल्यां भोजनं पर्यवेषितम्। न एतादृशम् स्वादु भोजनमद्यावधि बालिका खादितवती। काको अवदत्- बालिके !
अहमिच्छामि यत् त्वं सर्वदा अत्रैव तिष्ठ परं तव माता तु एकाकिनी वर्तते। अतः त्वं शीघ्रमेव स्वगृहं गच्छ।

1 एकपदेन उत्तरत।

{ $\frac{1}{2} \times 2 = 1$ }

- ख. बालिका कीदृशं भोजनमद्यावधि न खादितवती?
क. स्वर्णकाकेन बालिकायै भोजनं कस्यां पर्यवेषितम्?

2 पूर्णवाक्येन उत्तरत।

{ $1 \times 2 = 2$ }

- क. काकः किम् अवदत्?
ख. बालिका किमर्थं विस्मयं गता?

4 निर्देशानुसारम् उत्तरत।

{ $1 \times 2 = 2$ }

क. 'तदा सा कन्या आश्चर्यचकिता संजाता।' अस्मिन् वाक्ये 'कन्या' इति विशेष्यपदस्य विशेषणपदं किमस्ति?

{अ} सज्जाता {ब} तदा {स} आश्चर्यचकिता {द} सा

ख. अनुच्छेदे 'जननी' इत्यस्य पदस्य कः पर्यायः लिखितः?

{अ} एकाकिनी {ब} गता {स} माता {द} तव

ग. 'त्वं शीघ्रं स्वगृहं गच्छ।' अत्र क्रियापदं किमस्ति?

{अ} स्वगृहम् {ब} गच्छ {स} शीघ्रम् {द} एकाकिनी

प्रश्न 14 अधोलिखितं पद्यांशं पठित्वा प्रश्नानाम् उत्तराणि लिखत।

पिबन्ति नद्यः स्वयमेव नाम्भः स्वयं न खादन्ति फलानि वृक्षाः।
नादन्ति सस्यं खलु वारिवाहाः परोपकाराय सतां विभूतयः।।
गुणा गुणज्ञेषु गुणा भवन्ति ते निर्गुणं प्राप्य भवन्ति दोषाः।
आस्वाद्यतोयाः प्रवहन्ति नद्यः समुद्रमासाद्य भवन्त्यपेयाः।।

1 एकपदेन उत्तरत।

{ $\frac{1}{2} \times 2 = 1$ }

- क. के स्वयमेव फलानि न खादन्ति?
ख. समुद्रमासाद्य काः अपेयाः भवन्ति?

2 पूर्णवाक्येन उत्तरत।

{ $1 \times 2 = 2$ }

- क. कीदृश्यः नद्यः प्रवहन्ति?
ख. गुणाः कम् प्राप्य दोषाः भवन्ति?

3 निर्देशानुसारम् उत्तरत।

{ $\frac{1}{2} \times 4 = 2$ }

क. 'सरिताः' इति पदस्य पर्यायपदं गद्यांशे किं प्रयुक्तम्?

{अ} नाम्भः {ब} गुणाः {स} नद्यः {द} गुणज्ञेषु

ख. 'प्रवहन्ति' इति क्रियापदस्य कर्तृपदम् किम्?

{अ} दोषाः {ब} गुणाः {स} वारिवाहाः {द} नद्यः

ग. 'पेयाः' इति पदस्य विलोमपदं गद्यांशे किं प्रयुक्तम्?

{अ} अपेयाः {ब} भवन्ति {स} समुद्रम् {द} दोषाः

घ. 'गुणज्ञेषु' इति पदे का विभक्तिः प्रयुक्ता?

{अ} प्रथमा {ब} तृतीया {स} पंचमी {द} सप्तमी

प्रश्न 15 अधोलिखितं नाट्याशं पठित्वा प्रश्नानाम् उत्तराणि लिखत ।

चन्दनः – अहा! सुगन्धस्तु मनोहरः (विलोक्य) अये मोदकानि रच्यन्ते? (प्रसन्नः भूत्वा) आस्वादयामि तावत् ।
(मोदकं ग्रहीतुमिच्छति)

मल्लिका– (सक्रोधम्) विरम । विरम । मा स्पृश एतानि मोदकानि ।

चन्दनः – किमर्थं कुध्यसि! तव हस्तनिर्मितानि मोदकानि दृष्ट्वा अहं जिह्वालोलुपतां नियन्त्रयितुम् अक्षमः अस्मि,
किं न जानासि त्वमिदम्?

मल्लिका– सम्यग् जानामि नाथ! परम् एतानि मोदकानि पूजानिमित्तानि सन्ति ।

चन्दनः – तर्हि, शीघ्रमेव पूजनं सम्पादय । प्रसादं च देहि ।

मल्लिका– भोः! अत्र पूजनं न भविष्यति । अहं स्वसखीभिः सह श्वः प्रातः काशीविश्वनाथमन्दिरं गमिष्यामि, तत्र
गंगास्नानं धर्मयात्राम् च वयं करिष्यामः ।

चन्दनः – सखिभिः सह! न मया सह! (विषादं नाटयति)

मल्लिका– आम् । चम्पा, गौरी, माया, मोहिनी, कपिलादयः सर्वाः गच्छन्ति । अतः, मया सह तवागमनस्य औचित्यं
नास्ति । वयं सप्ताहान्ते प्रत्यागमिष्यामः । तावत्, गृह-व्यवस्थां, धेनोः दुग्धदोहनव्यवस्थाम् च परिपालय ।

मल्लिका– भो! अत्र पूजनं न भविष्यति । अहं स्वसखिभिः सह श्वः प्रातः काशीविश्वनाथ-मन्दिरम् प्रति गमिष्यामि,
तत्र गंगास्नानं धर्मयात्राम् च वयं करिष्यामः ।

1 एकपदेन उत्तरत ।

{ $\frac{1}{2} \times 2 = 1$ }

क. मल्लिकया कानि रच्यन्ते?

ख. का स्वसखिभिः सह काशीविश्वनाथमन्दिरं प्रति गच्छति?

2 पूर्णवाक्येन उत्तरत ।

{ $1 \times 2 = 2$ }

क. मल्लिका काशीम् गत्वा किम् करिष्यति?

ख. कः मोदकानि दृष्ट्वा जिह्वालोलुपतां नियन्त्रयितुम् अक्षमः भवति?

3 निर्देशानुसारम् उत्तरत ।

{ $\frac{1}{2} \times 4 = 2$ }

क. संवादे 'जानासि' इति क्रियापदस्य कर्तृपदं किम्?

{अ} मल्लिका {ब} मया {स} अहम् {द} त्वम्

ख. संवादे 'दुःखम्' इति पदस्य पर्यायपदं किम्?

{अ} पूजनम् {ब} धर्मयात्राम् {स} औचित्यम् {द} विषादम्

ग. 'एतानि मोदकानि' इत्यनयोः पदयोः विशेषणपदं किम्?

{अ} सर्वाणि {ब} एतानि {स} मोदकानि {द} पूजानिमित्तानि

घ. 'यावत्' इति शब्दस्य विलोमपदं गद्यांशे किम् प्रयुक्तम्?

{अ} तत्र {ब} तावत् {स} सर्वत्र {द} अन्यत्र

प्रश्न 16 रेखांकितपदानि आधृत्य उचितं प्रश्ननिर्माणं कृत्वा लिखत ।

{ $1 \times 5 = 5$ }

क. भवता धृतोत्पत्तिरहस्यं व्याख्यातम्

ख. तपोदत्तः तपश्चर्यया विद्यामवाप्तुम् प्रवृत्तोऽति ।

ग. वृक्षाः फलम् न खादन्ति ।

घ. बालिका निर्धन-मातुः दुहिता आसीत् ।

ङ. नन्दिनी पादाभ्याम् ताडयित्वा चन्दनं रक्तरंजितं करोति ।

प्रश्न 17 अधोलिखितं काव्यांशं पठित्वा अन्वयं पूरयित्वा लिखत ।

{1/2x4=2}

वुद्धोऽहं त्वं युवा धन्वी सरथः कवची शरी ।
न चाप्यादाय कुशली वैदेहीं मे गमिष्यसि ॥

अन्वयः— अहं (1) ————— त्वम् युवा धन्वी, कवची, (2) ————— च
तथापि मे वैदेहीम् (3) ————— कुशली न (4) ————— ।

मंजूषा

शरी, गमिष्यति, वृद्धः, आदाय ।

अथवा

अधोलिखितं काव्यांशं पठित्वा मंजूषातः शब्दं चित्वा भावार्थं प्रपूर्य लिखत ।

वहति मन्दमन्दं सनीरे समीरे
कालिन्दात्मजायास्सवानीरतीरे,
नतां पक्तिमालोक्य मधुमाधवीनाम् ॥

भावार्थः—कविः भगवतीं (1) ————— यमुनायाः वेतसयुक्ततटे सजले वायोः (2) ————— वहति सति
मधुमाधवीनाम् नताम् (3) ————— दृष्ट्वा नवीनाम् वीणाम् नितरां वादयितुम् (4) ————— ।

मंजूषा

कथयति, मन्दमन्दम्, पंक्तिम्, भारतीम् ।

प्रश्न 18 अधोलिखितानि वाक्यानि घटनाक्रमानुसारम् लिखत ।

{1/2x8=4}

क. तस्मै ज्ञानं दातुम् इन्द्रः वेशं परिवर्त्य तस्य समीपम् अगच्छत् ।
ख. इदं श्रुत्वा तपोदत्तः विद्यां प्राप्तुं गुरुकुलम् अगच्छत् ।
ग. तदा तपोदत्तः इदं दृष्ट्वा तस्य उपहासं करोति ।
घ. एकः तपोदत्तः तपस्यारतः बालकः आसीत् ।
ङ. सः कथयति— भोः कथमेतत् व्यर्थमेव सिक्ताभिः सेतुनिर्माणं करोषि ।
च. सः पुरुषः गंगायाः सिक्ताभिः सेतुनिर्माणम् आरभत ।
छ. सः विद्या प्राप्त्यै अध्ययनं न कृत्वा केवलं तपः एव अकरोत् ।
ज. इन्द्रः अवदत्—“यदि तपसा एव त्वं विद्यां प्राप्स्यसि तर्हि अहमपि सिक्ताभिः सेतुनिर्माणं करिष्यामि” ।

प्रश्न 19 क. अधोलिखितानि रेखांकित-पदानि आधृत्य विकल्पेभ्यः उचितम् अर्थं चित्वा लिखत ।

{1/2x4=2}

क. एतत् आकर्ण्य तपोदत्तः अचिन्तयत् ।
{अ} पठित्वा {ब} नत्वा {स} गत्वा {द} श्रुत्वा
ख. वारिवाहाः खलु सस्यं न अदन्ति ।
{अ} मेघाः {ब} रसाः {स} मधुमासः {द} जलम्
ग. सः अध्ययनं कृत्वा केवलं तपः एव अकरोत् ।
{अ} अध्यायः {ब} बलम् {स} पठनम् {द} धनम्
घ. निरीक्ष्य रावणं क्षिप्रम् वैदेहीम् च ददर्श सः ।
{अ} हस्तम् {ब} शीघ्रम् {स} मलम् {द} मन्दम्

ख. अधोलिखितानि पदानि तेषाम् अर्थः सह मेलनं कृत्वा लिखत ।

{1/2x4=2}

क. जगति — पंक्तिम्
ख. बभञ्ज — संसारे
ग. ततिम् — उद्घाटितम्
घ. उन्मीलितम् — अत्रोटयत्



DELHI PUBLIC SCHOOL

SAIL TOWNSHIP, RANCHI

ANNUAL EXAMINATION (2022-23)

Class - IX
Time - 3 Hours

Subject - French
Maximum Marks - 80

Section - A

L'ARGENT DE POCHE

Je m'appelle Alex. Je reçois de l'argent de poche régulièrement de mon père. Avant, je recevrai 10 € par semaine, mais aujourd'hui je reçois 100 € par mois. Je crois que 100 € c'est assez. J'adore les vêtements et c'est pourquoi Je dépense beaucoup d'argent pour cela. Je peux augmenter mon argent de poche quand je nettoie la salle de bains ou quand je fais la cuisine. Chaque mois j'essaie de faire des économies pour mon futur. J'ai un propre compte où se trouvent mes économies.

Quand je fais du shopping, je compare souvent les prix et ensuite je me décide pour l'offre la moins chère. Je dépense aussi mon argent pour aller au cinéma. J'aime beaucoup les films et il est sûr que je vais au cinéma deux fois par semaine. Je le dépense quand j'assiste à une fête, quand je vais au café ou quand je m'achète quelque chose à manger. En résumé on peut dire que je sais comment profiter de la vie mais je suis aussi responsable parce que je fais beaucoup d'économies.

1. Dites vrai ou faux : [4]
 - 1) 100 € sont suffisant pour Alex ____
 - 2) Il reçoit 100 € pour nettoyer la salle de bains et pour faire la cuisine. ____
 - 3) Alex achète ce qu'il aime sans regarder le prix. ____
 - 4) Alex n'économise pas d'argent. ____

2. Complétez avec un mots du texte. [4]
 - 1) J'ai mon cours de piano trois ____ par semaine.
 - 2) Ma mère ne ____ pas beaucoup d'argent.
 - 3) Pour faire des _____, il faut ouvrir un compte.
 - 4) Elle ____ souvent les prix des produits.

3. Trouvez dans la texte le contraire de : [2]
 - 1) Maintenant -
 - 2) Dépenser -

Section - B

1. Écrire une lettre en décrivant les fête d'un pays : (80-85 mots) [10]
2. Invitez votre ami pour au concert. : (30-35 mots) [5]

3. Décrivez cette image : (30-35 mots)

[5]



(anniversaire,partie, cadeau, content, ami)

Section -C

Grammaire

1. Remplissez par les pronoms : Y/EN :

[5]

I. Es - tu allé en france cêt été ?

Oui, j' _____ suis allé.

II. Paul, a-t-il acheté des légumes au marché ?

Oui, il _____ a acheté.

III. As- tu mis tes livres dans le sac ?

Non, je n' _____ ai pas mis les livres.

IV. Est - il sorti du restaurant ?

Oui, il _____ est sorti.

V. As - tu pensé vâ tes projets d'avenir ?

Non, je n' _____ ai pas pensé.

2. Mettez les phrases à la forme négative :

[5]

a) Akansha a des lettres à écrire avant de partir.

b) Kunal a une grande voiture comme son voisin.

c) Il reste cinq mois à paris.

d) Je veux le voir le jour de mon anniversaire.

e) Elle boit du café juste avant de dormir.

3. Remplacez par le, la , l', les, lui, leur : [5]
- 1) As tu pris l'adresse de ton ami ?
 - 2) Ne parlez - vous pas aux M. Et Mme. Brunot?
 - 3) Écoutez- vous les nouvelles tous les jours ?
 - 4) Parle -t- il souvent à ses parents ?
 - 5) Vous téléphonez à mon mère ?
4. Mettez au temps convenable : [5]
- 1) Paul et marie _____ (aller) en belgique l'été dernier.
 - 2) Ces gens _____ (se rencontrer) il y a 2 jours.
 - 3) Dans un moment , le train _____ (partir)
 - 4) _____ (vouloir) remplir cette fiche , monsieur !
 - 5) Hier soir , je _____ (aller) au marché.
5. Trouvez les questions : [5]
- a) Non, merci .
 - b) Je vais chez mon oncle.
 - c) Je voudrais acheter du roquefort.
 - d) Elle préfère le café.
 - e) In ya trois gateaux dans le frigo.
6. Complétez ces histoires en utilisant le passé composé et l'imparfait. [5]
- Une fois, il y _____ (avoir) un singe.il _____
 (habiter) près d' un fleuve sur le pommier. Il _____
 des pommes tous les jours. Un jour, un crocodile_____ (venir) habiter
 avec sa femme près du fleuve. Il _____ (devenir) amis avec le singe.
 La femme su crocodile lui _____ (dit) qu'elle _____
 (vouloir) manger le cœur du singe.

Section - D

Culture and civilisation

1. Répondez aux questions suivantes : [5]
- a) Quel temps fait - il en été dans votre pays.
 - b) Que buvez -vous en hiver ?
 - c) Quels sont les moyens de transport en france ?
 - d) Qui est Naomi campbell ?
 - e) Qu'est-ce que aller retour ?
2. Completez. [5]
1. En Inde, on ne gagne pas
 (a) d'argent (b) d'argent de poche (c) de notes
 2. Avec l'argent de poche, on achete
 (a) des cadeaux (b) des maisons (c) le cinema
 3. Avec la Carte Junior, on peut de l'argent
 (a) depenser (b) retirer (c) prendre

4. Quelques jeunes l'argent de poche.
(a) economisent **(b)** gagne **(c)** dependent
5. Quand on ouvre le compte sur livret, on regoit
(a) la Carte Junior **(b)** le distributeur **(c)** la Carte Visa.

3. choisissez le bonne response :

[5]

1. Les Frangais mangent au petit dejeuner.
(a) des croissants **(b)** de la viande **(c)** des la salade
2. Les Frangais mangent au diner.
(a) dupoulet **(b)** du pain **(c)** des tartines
3. dst un dessert.
(a) Le potage **(b)** La glace **(c)** La confiture
4. n'est pas un dessert.
(a) La glace **(b)** Le gateau **(c)** Le potage
5. c'est man plant favori.
(a) La pomme de terre **(b)** Le dosa **(c)** Le chou-fleu

4. Reliez et recrivez :

[5]

- | | |
|------------------------------|---------------------|
| 1. Les Champs-Elysees | (a) monument en fer |
| 2. Notre Dame | (b) belle avenue |
| 3. Le theatre de Guignol | (c) marionette |
| 4. La tour Eiffel | (d) mosa'iques |
| 5. La Basilique de Fourviere | (e) eglise |
| 6. ete | (f) hiver |
| 7. feuilles | (g) 11 pleut |
| 8. regime | (h) soleil |
| 9. parapluie | (i) legumes |
| 10. hiver | (j) neige |
| 11. bonhomme | (k) automne |



DELHI PUBLIC SCHOOL

SAIL TOWNSHIP, RANCHI

ANNUAL EXAMINATION (2022-23)

Class - IX
Time - 3 Hours

Subject - Spanish
Maximum Marks - 80

1. Lee el texto y contesta las preguntas :

[10]

Mi familia es muy grande, mi padre se llama Carlos y mi madre se llama Rosa. Vivimos en un pueblo muy pequeño cerca de Badajoz que se llama Olivenza. Mi padre tiene cincuenta y seis años y mi madre tiene cincuenta y cinco. Tengo dos hermanos y una hermana. El mayor tiene treinta y dos años y se llama José y la más pequeña soy yo y me llamo Aurora. También tengo dos perros y un gato y me gusta mucho pasear con ellos y jugar a la pelota.

- ¿Quién está hablando en este párrafo?
- ¿Qué se llaman sus padres?
- ¿Cuántos años tienen sus padres?
- ¿Cuántas mascotas tiene Aurora?
- ¿Cuántos hermanos son Aurora?

2. Lee la siguiente y señala si es verdadero (V) o falso (F)

[5]

Para: marta@difusion.com

Asunto: Desde Barcelona

¡Hola, Marta! ¿Cómo estás?

Yo sigo en Barcelona... ¡y estoy disfrutando mucho de mi estancia! El curso de español me gusta mucho y mis compañeros son muy simpáticos. Tengo clase por la mañana: empiezo a las nueve y termino a la una. La escuela organiza a veces actividades después de comer, pero yo prefiero tomarme la tarde libre para descansar o pasear por la ciudad. Normalmente como un bocadillo en la escuela y después voy a visitar algún lugar interesante. He visto ya la Sagrada Familia y también la catedral, y mañana voy al Parque Güell. Por las noches suelo salir con mis compañeros de clase, vamos a tomar algo en una terraza o a bailar. Ahora conozco muchos locales y realmente me encanta la vida nocturna de Barcelona. Lo que no me gusta tanto es la pensión en la que estoy, pero continué allí... ahora ya no merece la pena buscar otro sitio para el poco tiempo que me queda de vacaciones. Tengo que acostarme ya porque es bastante tarde y mañana pienso levantarme pronto para ir a correr un poco. ¡No hago nada de deporte últimamente!

Besos y hasta pronto,

Sabine

- a. Marta escribe este correo de su experiencia a Sabine. V/F
 - b. Lo que no le gusta a Sabine es salir por la noche. V/F
 - c. Sabine ha visto la Sagrada Familia y la catedral. V/F
 - d. La Sagrada Familia está colocada en Madrid. V/F
 - e. Lo que le gusta es la pensión en la que está ella. V/F
3. Escribe un texto de diez frases sobre España. [10]
4. Escribe un correo electrónico sobre tu experiencia de viajar a un lugar interesante. (50 - 80 palabras) [5]
5. Contesta a las preguntas siguientes :
- a. ¿Cómo describes a Mafalda? [2]
 - b. ¿Quién es Susanita? [1]
 - c. ¿Escribe sobre Pablo Neruda y quienes son sus dos obras famosas. [2]
6. Responde a las cuestiones abajos:
- a. Escribe cinco nombres de comida en la calle de America Latina. [2]
 - b. Escribe 4 consejos para una dieta sana. [1]
 - c. Escribe sobre Miguel de Cervantes y quienes son sus dos obras más famosas. [2]
7. Contesta a las preguntas siguientes:
- a. Escribe un texto corto sobre Zaragoza. [2]
 - b. Describe tu barrio propio en dos frases. [1]
 - c. Describe un barrio emblemático de Madrid. [2]
8. Responde a las preguntas abajos :
- a. ¿Cómo son los chicos de quienes describe Raquel? [2]
 - b. ¿Cuál crees que es la mejor pareja para Raquel? [1]
 - c. ¿Cuántos tipos empleados necesitan en proyecto Sarabbarri? [2]
9. Cómo respondes con las palabras abajos: [5]
(Yo también/yo tampoco, yo nunca, yo a veces, yo si)
- a. Me lavo los dientes antes y después de comer.
 - b. No voy al gimnasio antes de dormir.
 - c. Estudio por la noche después de cenar.
 - d. Me ducho siempre antes de dormir.
 - e. Nunca veo la televisión después de cenar.

10. Haz las frases con Se, poner, traer, lo, la, los, las : [5]
- a. se -
 - b. poner -
 - c. traer -
 - d. yo compro el pan de panadería-
 - e. Tú comes los cereales con leche -
 - f. Hago cama antes de dormir -
 - g. Yo cocino las verduras con aceite y especias -
11. Completa con Cuantificadores, proposiciones y adverbios de lugar : [10]
- a. ¿Sabes si hay supermercado por aquí cerca?
 - b. Si hay en la esquina. (uno, algún, ninguna)
 - c. ¿Sabes si hay panadería en el centro comercial?
 - d. No, no hay (ningún, ninguna, alguna)
 - e. Perdona ¿hay una gasolinera aquí. (en, por, de)
 - f. Esta tarde voy a visitar mis padres. (de, a, en)
 - g. Vamos taxi. (con, de, en)
 - h. El banco está (en, a la derecha, lejos)
12. Haz dos frases con cada uno del pretérito perfecto, saber + infinitivo y poder + infinitivo [10]
-



DELHI PUBLIC SCHOOL

SAIL TOWNSHIP, RANCHI

ANNUAL EXAMINATION (2022-23)

Class - IX
Time - 3 Hours

Subject - German
Maximum Marks- 80

	General Instructions: <ol style="list-style-type: none">1. This paper has four sections i.e., Reading, Writing, Grammar and Textbook.2. The marks for each section are defined with individual questions.3. Attempt question of one group at one place.4. Write complete sentence for fill in the blanks type question.5. Read the instructions carefully and attempt only the required number of questions where internal choices are given.	
	Section A- LESEN (Reading) (20 marks)	
I.	Anpacken im Urlaub <p>In Sachsen - Anhalt und Thüringen stehen auf rund 760 Hektar Fläche die Reben für Weiß und Rotwein. Die Region ist wegen ihrer Landschaft und Qualitätswein bei den Urlauben sehr beliebt. Dieses Jahr gab es in der Region im Vergleich zum Vorjahr mehr Übernachtungen. Dazu beigetragen haben neben dem Interesse am Wein vor allem das Wetter.</p> <p>Längst reisen Urlauber nicht mehr nur zum Entspannen und Genießen in die Weinberge. Viele von ihnen wollen den Weinbrauen bei der Arbeit helfen. Im Wein Anbaugebiet steigt beim Winzer nicht nur die Nachfrage für Übernachtungen.</p> <p>„Immer mehr Gäste erkundigen sich danach, wo sie während ihres Aufenthalts beim Weinbauer mitarbeiten können“, sagt Sandra Polomski, Chefin der Gebietsweinwerbung.</p> <p>„Die Leute wollen immer mehr wissen, wo genau der Wein herkommt, den sie im Glas haben, wollen mit dem Winzer ins Gespräch kommen“. Im Anbaugebiet gebe es rund 30 Winzer im Haupterwerb und rund 30 Hobby - Winzer. Im Bad Kosen können Weinfreunde an zwei festen Samstagen im Oktober bei der Lese mithelfen. Sprecherin Josephine Markwitz sagt. „Mehr können wir logistisch auch nicht handeln. Wir können das mithelfen nicht jeden Tag anbieten“. Erklärte sie. „Wir können die Leute auch nicht dafür bezahlen. Es geht dann mehr um den Spaß an der Sache, um die Liebe zum Wein“, betont sie zum Einsatz von Touristen als freiwillige Helfer.</p>	

	<p>A. Richtig oder falsch?</p> <p>a. Es gibt Weinanbaugebiete in Sachsen – Anhalt und Thüringer.</p> <p>b. Die Weinberge der Region sind beliebte Reiseziele der Urlauber.</p> <p>c. Die Urlauber brauchen in Urlaub, nur zu entspannen.</p> <p>d. Immer mehr Urlauber wollen bei den Winzern übernachten.</p> <p>e. Während des Aufenthalts können die Urlauber auch mitarbeiten und Geld verdienen.</p> <p>B. Antwort die folgenden Fragen:</p> <p>a. Warum ist diese Region bei den Urlaubern beliebt?</p> <p>b. Warum wollen die Urlauber den Weinbauern bei der Arbeit helfen?</p> <p>c. Wie viele Winzer gibt es im Anbaugebiet?</p> <p>d. Wann können die Weinfreunde mitarbeiten?</p> <p>e. Wozu arbeiten die Touristen während der Lese als freiwillige Helfer?</p>	<p>1x5=5</p> <p>1x5=5</p>
<p>II.</p>	<p>Angela Merkel ist 1954 in Hamburg geboren. Als Kind hat sie in Brandenburg gelebt. Später sie in Leipzig Physik studiert. Sie ist 1,68 Meter groß und hat blaue Augen. Sie liebt die Natur. Darum arbeitet sie gern im Garten und wandern in ihrer Freizeit. Im Moment lebt und Arbeiter sie in Berlin, Ihr Terminkalender ist immer voll. Sie ist oft unterwegs und reist durch Deutschland und Europa oder fliegt nach Asien, Amerika und Afrika. Sie besucht die Präsidenten von anderen Ländern. Man kann sie sehr oft im Fernsehen sehen. Dann redet sie meistens über Politik. Sie erklärt, was die deutsche Regierung macht und was sie plant. Vielleicht ist sie die berühmteste Frau in Deutschland. Sie hat keine Kinder, aber sie ist verheiratet. Allerdings sieht man ihren Mann fast nie.</p> <p>A. Richtig oder Falsch?</p> <p>1. Angela ist in Süddeutschland geboren.</p> <p>2. Sie ist zum Studium nach Leipzig gegangen.</p> <p>3. Zurzeit arbeitet sie in Berlin.</p> <p>4. Sie ist oft mit ihrem Mann unterwegs.</p> <p>B. Beantworte die Fragen.</p> <p>1. Wo und wann ist Angela Merkel geboren?</p> <p>2. Was hat sie studiert?</p>	<p>.5x4=2</p> <p>4</p>

	<p>3. Worüber spricht sie im Fernsehen?</p> <p>4. Was ist ihre Lieblingsfreizeitbeschäftigung?</p> <p>C. Such Gegenteile aus dem Text.</p> <p>1. früher x _____ 3. Selten x _____</p> <p>2. leer x _____ 4. Ledig x _____</p> <p>D. Bilde Sätze.</p> <p>1. Freizeit 2. Vielleicht</p>	<p>.5x4=2</p> <p>1x2=2</p>
	<p>Section B - SCHREIBEN (Writing) (10 marks)</p>	
III.	<p>Schreib eine E - Mail an deinen Brieffreund/ deine Brieffreundin zu folgenden zwei Punkten:</p> <p>Was hast du am Wochenende gemacht?</p> <p>Was machst du mit dem Taschengeld?</p>	5
IV.	<p>Du machst eine Sprachreise und bist schon seit einer Woche in Hamburg. Schreibe Eine E-Mail an deine Eltern und erzähle:</p> <ul style="list-style-type: none"> • wie es dir in Deutschland geht. • wie ist die Gastfamilie, bei der du wohnst. • wie findest du den Sprachkurs und die Lehrer • welche Sehenswürdigkeiten hast du schon besichtigt 	5
	<p>Section C - GRAMMAR (Applied Grammar) (30 marks)</p>	
V.	<p>A. Ergänze: „als“ oder „wenn“</p> <p>a. _____ ich 8 Monate alt war, hatte ich noch keine Zähne.</p> <p>b. _____ ich morgens zu spät aufstehe, laufe ich immer zur Schule.</p> <p>c. _____ ich ein Kind war, durfte ich nicht fernsehen.</p> <p>d. _____ Ich jünger war, wollte ich mit Mama schlafen.</p> <p>e. _____ ich 5 Jahre alt war, schenkte mir meine Mutter eine Katze.</p> <p>B. Verbinde die zwei Sätze mit Konjunktionen.</p> <p>1. Ich lerne Gitarre. Ich kann in der Schulband mitspielen. [damit]</p> <p>2. Sabine geht regelmäßig ins Fitness- Zentrum. Sie will abnehmen. [um...zu]</p> <p>3. Ich will ein neues Smartphone kaufen. Ich habe nicht genug</p>	<p>1x5=5</p> <p>.5x4=2</p>

	<p>Geld. [zwar...aber]</p> <p>4. Ich surfe im Internet. Meine Schwester macht ihre Hausaufgaben. [während]</p>	
VI.	<p>Wähle die richtigen Präpositionen aus.</p> <p>1. Ich möchte nicht _____ Politik diskutieren. [über, um, zu]</p> <p>2. Ich ärgere mich so _____ Hans. [für, über, mit]</p> <p>3. Kommt schnell! Wir warten _____ euch. [für, auf, zu]</p> <p>4. Jemand hat mich heute _____ dir gefragt. [bei, über, nach]</p> <p>5. Wir möchten euch herzlich _____ eurem Erfolg gratulieren. [für, zu, bei]</p> <p>6. Wir wollen euch _____ unserer Hochzeit einladen. [für, zu, von]</p> <p>7. Ich muss morgen _____ meinen Eltern im Iran telefonieren. [mit, für, nach]</p> <p>8. Heute treffen wir uns _____ der neuen Direktorin. [mit, an, bei]</p> <p>9. Frau Halle hat uns _____ die Prüfung informiert. [über, zu, von]</p> <p>10. Nachmittags muss ich mich _____ die Kinder kümmern. [über, mit, um]</p> <p>11. Wann fängst du _____ der Arbeit an? [für, über, mit]</p> <p>12. Er hilft seinem Vater _____ der Arbeit. [für, zu, bei]</p>	.5x12=6
VII.	<p>Ergänze die richtigen Verben.</p> <div style="border: 1px solid black; padding: 5px; margin: 10px 0;"> einladen, aufstehen, mitbringen, ankommen, anfangen </div> <p>1. Wann _____ der Film _____? - Um 17.00 Uhr.</p> <p>2. Markus und Martina _____ für die Party Nudeln und Kekse _____.</p> <p>3. Der Zug _____ um halb neun in Frankfurt _____.</p>	1x6=6

	<p>4. Wir _____ alle Klassenkameraden _____.</p> <p>5. Wann _____ die Mutter _____?</p> <p>6. Tina _____ sieht zwei Stunden pro Tag _____.</p>	
VIII.	<p>Ergänze die Relativpronomen.</p> <p>1. Mein bester Freund, _____ Jonas heißt, klettert gern.</p> <p>2. Ich besuche meinen Onkel, mit _____ ich nach Berlin fahre.</p> <p>3. Der Hamburger Hafen, _____ wir gesehen haben, ist schön.</p> <p>4. Der Junge, _____ mit dem Bus fährt, ist wirklich frech.</p> <p>5. Die Freundin, für _____ ich Blumen kaufe, ist mir böse.</p> <p>6. Das ist Cornelia, _____ eine E-Mail an Carolin geschrieben hat.</p>	1x6=6
IX.	<p>Ergänze die Artikel und die Präpositionen: während oder wegen.</p> <p>1. Er konnte _____ d _____ schlechten Wetters nicht kommen.</p> <p>2. Ich muss _____ d _____ Deutschunterrichts nur Deutsch sprechen.</p> <p>3. Was machst du _____ d _____ Ferien?</p> <p>4. _____ d _____ Regens findet der Fußball spiel nicht statt.</p> <p>5. _____ d _____ Pause war ich im Lehrerzimmer.</p>	1x5=5
	<p>Section D - (Textbook) (20 marks)</p>	
X.	<p>Lies den Teext und beantworte die Fragen:</p> <p>Ich bin so wütend! Ellie hat ein Foto von mir gepostet, von der Klassenfahrt. Ich finde das Foto fruchtbar! Und sie hat mich gar nicht gefragt. Ich finde das nicht in Ordnung. Ich war gerade im Bad und habe mir die Zähne geputzt. Da ist die Tür aufgegangen und Ellie stand draußen am Gang mit der Kamera und Klick! macht das Foto! Und dann postet sie es im Internet! Ich mache ein total blödes Gesicht wegen dieser Zahnbrüste im Mund. Das sieht so doof aus! Und ich habe voll die weiße Zahnpaste im Gesicht. Das ist peinlich, und meine Haare! Alles voll durcheinander.</p> <p>Sofie Baumann</p>	

	<p>Fragen:</p> <p>a. Wie findest du Ellis Verhalten? b. Wie findest du Sofis Reaktion? c. Wie würdest du in dieser Situation reagieren? d. Darf man Fotos von anderen posten, wenn man vorher nicht gefragt hat? Begründe deine Antwort.</p>	<p>2 2 2 4</p>
<p>XI.</p>	<p>Ergänze die passenden Wörter.</p> <div style="border: 1px solid black; padding: 5px; margin: 10px auto; width: fit-content;"> <p>Stunden - Rundfahrt - Abfahrt - besichtigen - berühmte - bekommt</p> </div> <p>Die „Große Hafentrundfahrt“ ist ein Klassiker und ein Muss für jeden Hamburg-Besucher: immer wieder gut und immer wieder anders! Die _____(1) dauert eine Stunde. Viele Highlights _____(2) auf sie: unter anderem das _____(3) Segelschiff Rickmer Rickmers - heute ein Museum- und die legendäre Hamburger Speicherstadt. _____(4) täglich zwischen 11 und 16 Uhr, ca. jede Stunde ab,, St. Pauli Landungsbrücken Auf dieser Stadtrundfahrt lernt ihr wichtige Hamburger _____(5) kennen und habt die Möglichkeit, sie direkt zu _____(6) : zuerst die Alster, dann das Rathaus, die Speicherstadt, die HafenCity und den Michel. Zurück in St. Pauli geht es zu den Landungsbrücken und der Reeperbahn. An jedem Ort haltet ihr an und _____(7) von eurem Stadtführer interessante Informationen. Ihr _____(8) Fotos machen und Fragen. _____(9) Dauer: 3,5 _____(10).</p>	<p>1x10=10</p>



DELHI PUBLIC SCHOOL
SAIL TOWNSHIP, RANCHI
ANNUAL EXAMINATION (2022-23)

Class - IX
Time - 3 Hours

Subject - Mathematics
Maximum Marks - 80

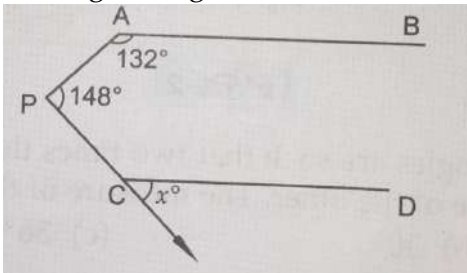
General Instruction:-

1. This question paper has 5 Sections A to E.
2. Section A has 20 MCQs carrying 1 mark each.
3. Section B has 5 questions carrying 2 marks each.
4. Section C has 6 questions carrying 3 marks each.
5. Section D has 4 questions carrying 5 marks each.
6. Section E has 3 case based integrated units of assessment (04 marks each) with marks of the subparts indicated in each respectively.
7. All questions are compulsory. However, an internal choice in 2 questions of 5 marks, 2 questions of 3 marks and 2 questions of 2 marks has been provided. Internal choice has been provided in the 2 marks questions of Section E.
8. Draw neat figures wherever required. **Take $\pi=22/7$** wherever required if not stated.

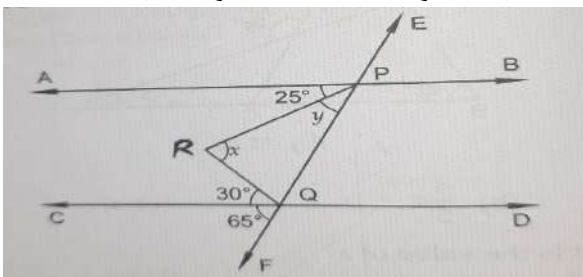
SECTION A

1. The value of $\sqrt{5 + 2\sqrt{6}}$ is :
 - a) $\sqrt{3} - \sqrt{2}$
 - b) $\sqrt{3} + \sqrt{2}$
 - c) $\sqrt{5} - \sqrt{6}$
 - d) $\sqrt{5} + \sqrt{6}$
2. If $0.142857142857\dots$ is expressed in the form of $\frac{m}{n}$, then the value of $(2m+n)$ is :
 - a) 1
 - b) 2
 - c) 7
 - d) 9
3. The value of $\frac{(2.3)^3 - 0.027}{(2.3)^2 + 0.69 + .09}$ is :
 - a) 2
 - b) 3
 - c) 2.327
 - d) 2.273
4. The remainder when $x^3 + 3x^2 + 3x + 1$ is divided by $x - 1$ is :
 - a) -1
 - b) 8
 - c) -7
 - d) 3

5. If $x^2 + \frac{1}{x^2} = 102$, then the value of $x - \frac{1}{x}$ is :
- 8
 - 10
 - 12
 - 13
6. The distance between the graphs of the equation $y = -2$ and $y = 3$ is :
- 5
 - 1
 - 6
 - 1
7. The area of the triangle formed by the points $A(2,0)$, $B(6,0)$ and $C(4,6)$ is :
- 24 sq units
 - 12 sq units
 - 10 sq units
 - None of these
8. In the given figure if $AB \parallel CD$, then $x = ?$

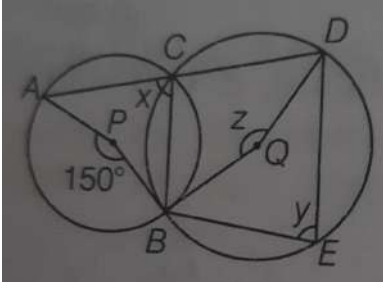


- 100°
 - 105°
 - 110°
 - 115°
9. In the given figure $AB \parallel CD$ and transversal EF intersects them at P and Q respectively. If $\angle APR = 25^\circ$, $\angle RQC = 30^\circ$ and $\angle CQF = 65^\circ$, then :

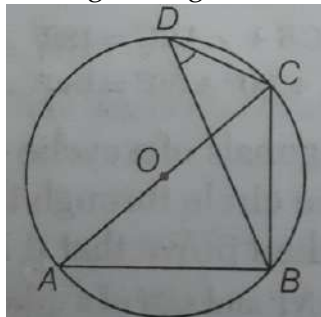


- $x = 55^\circ, y = 45^\circ$
 - $x = 55^\circ, y = 40^\circ$
 - $x = 65^\circ, y = 45^\circ$
 - $x = 65^\circ, y = 40^\circ$
10. The figure formed by joining the mid points of adjacent sides of a rectangle is a :
- Square
 - Rectangle
 - Rhombus
 - None of these

11. In the given figure, P and Q are centres of the two circles which intersect at B and C. ACD is a straight line. Find the values of x, y and z.



- a) $x=y=70^\circ$ and $z=140^\circ$
 b) $x=y=150^\circ$ and $z=75^\circ$
 c) $x=y=75^\circ$ and $z=150^\circ$
 d) $x=z=150^\circ$ and $y=75^\circ$
12. In the given figure, O is the centre of the circle and $\angle BDC=42^\circ$, then find the value of $\angle ACB$.



- a) 60°
 b) 42°
 c) 24°
 d) 48°
13. If each side of a triangle is tripled then the % change in its area is :
- a) 300%
 b) 500%
 c) 800%
 d) 200%
14. The length of three sides of a triangle are 18 cm, 24 cm and 30 cm, then the height corresponding to smallest side is :
- a) 24 cm
 b) 16 cm
 c) 12 cm
 d) 32 cm
15. The vertical cross section of a right circular cylinder is always a :
- a) square
 b) rectangle
 c) rhombus
 d) trapezium

16. A cone, a hemisphere and a cylinder stand on equal bases and have the same height. The ratio of their volumes is :
- 1:2:3
 - 2:1:3
 - 2:3:1
 - 3:2:1
17. The mean of a,b,c,d and e is 28. If the mean of a,c and e is 24, what is the mean of b and d?
- 32
 - 33
 - 34
 - 4
18. A die is thrown 100 times. If the probability of getting an even number is $\frac{2}{5}$. How many times an odd number is obtained?
- 15
 - 30
 - 45
 - 60

DIRECTION: In the question number 19 and 20 , a statement of Assertion (A) is followed by a statement of Reason (R).Choose the correct option :

19. **Assertion (A):** An irrational number can't be represented on a real number line.
Reason (R): Irrational numbers are real numbers.
- Both assertion (A) and reason (R) are true and reason (R) is the correct explanation of assertion (A).
 - Both assertion (A) and reason (R) are true and reason (R) is **not** the correct explanation of assertion (A).
 - Assertion (A) is true but reason (R) is false.
 - Assertion (A) is false but reason (R) is true.
20. **Assertion (A):** Let a pair of parallel lines be intersected by a transversal. Then the bisectors of a pair of co-interior angles on the same side of the transversal enclose a right angle.
- Reason (R):** The angle between the bisectors of any two interior angles of a triangle is equal to $90^\circ + \text{half the } 3^{\text{rd}} \text{ angle}$.
- Both assertion (A) and reason (R) are true and reason (R) is the correct explanation of assertion (A)
 - Both assertion (A) and reason (R) are true and reason (R) is **not** the correct explanation of assertion (A)
 - Assertion (A) is true but reason (R) is false.
 - Assertion (A) is false but reason (R) is true.

SECTION B

21. Simplify : $\frac{4+3\sqrt{5}}{4-3\sqrt{5}} + \frac{4-3\sqrt{5}}{4+3\sqrt{5}}$.
22. Express y in terms of x in the equation $2x + 3y = 12$. Find the point where
 (i) the line cuts the $x - axis$.
 (ii) the line cuts the $y - axis$.
23. If lines PQ, PR, PS and PT are parallel to a line 'l' then what can be said about the points P, Q, R, S and T? Explain by drawing figure.

OR

State Euclid's fifth postulate and explain how it implies the existence of parallel lines.

24. The height and the slant height of a cone are 21 cm and 28 cm respectively. Find the volume of the cone.

OR

The paint in a certain container is sufficient to paint an area equal to $9.375m^2$. How many bricks of dimensions 22.5 cm X 10 cm X 7.5 cm can be painted out of this container?

25. The mean of 50 observations was found to be 80.4. But later on, it was discovered that 96 was misread as 69. Find the correct mean ?

SECTION C

26. It is given that $\angle ABC = 60^\circ$ and AB is produced to a point P. Draw a figure from the given information. If ray BQ bisects $\angle CBP$, then find $\angle ABQ$ and reflex $\angle QBP$.

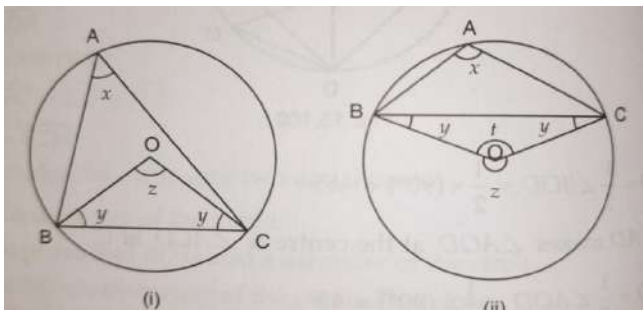
OR

ABCDE is a regular pentagon and bisectors of $\angle BAE$ meet CD at M. If bisectors of $\angle BCD$ meets AM at P, then find $\angle CPM$?

27. Three girls Reshma, Salma and Mandip are playing a game by standing on a circle of radius 5 m drawn in a park. Reshma throws a ball to Salma, Salma to Mandip and Mandip to Reshma. If the distance between Reshma and Salma and between Salma and Mandip is 6 m each, What is the distance between Reshma and Mandip?
28. D and E are respectively, the points on equal sides AB and AC of an isosceles triangle ABC such that B,C,E and D are concyclic. If O is the point of intersection of CD and BE, prove that AO is the perpendicular bisector of line segment DE.

OR

BC is a chord of a circle with centre O. A is a point on an arc BC as shown in the figure.



Prove that:

(i) $\angle BAC + \angle OBC = 90^\circ$ if A is a point on the major arc.

(ii) $\angle BAC - \angle OBC = 90^\circ$ if A is a point on the minor arc.

29. Water flows out through a circular pipe whose internal diameter is 2 cm. The water is collected in a cylindrical vessel of base diameter 1.2 m. The water level rises by 3 m in 30 minutes. Find the speed of water flow through the pipe.

30. ABCD is a trapezium in which $AB \parallel DC$, $AB = 18$ cm, $BC = 30$ cm, $CD = 46$ cm and $AD = 26$ cm. Find the area of the trapezium.

31. The table shows the number of people visiting the "Good living pavilion" in a trade fair during different times of the day.

Time	9am-11am	11am-1pm	1pm-3pm	3pm-5pm	5pm-7pm
No. of people	175	125	225	200	120

Find the probability that the randomly chosen person visited the pavilion :

(i). After 1 pm but before 5 pm

(ii). Between 9 am to 1 pm.

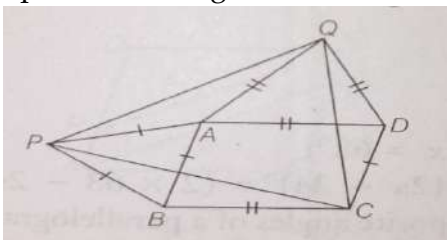
(iii). After 5 pm.

SECTION D

32. (i) The polynomial $f(x) = ax^3 - 3x^2 + 4$ and $g(x) = 2x^3 - 5x + a$ when divided by $(x-2)$ and $(x-3)$ leave the remainders p and q respectively. If $p-2q=4$, then find the value of a . [3]

(ii) Prove that $a^2 + b^2 + c^2 - ab - bc - ca$ is always non-negative for all values of a , b and c . [2]

33. In the parallelogram ABCD of the given figure, $\angle PAQ$ is an obtuse angle. Two equilateral triangles ABP and ADQ are drawn outside the parallelogram. Prove that $\triangle CPQ$ is also an equilateral triangle.



OR

ABCD is a rectangle and P, Q, R and S are mid - points of the sides AB, BC, CD and DA respectively. Show that the quadrilateral PQRS is a rhombus .

34. The difference between outside and inside curved surface areas of a cylindrical metallic pipe 21 cm long is 66 cm^2 . If the pipe is made of $181\frac{1}{2} \text{ cm}^3$ of metal, find the outer and inner radii of the pipe.

OR

The external length, breadth and height of a closed rectangular wooden box are 18 cm, 10 cm and 6 cm respectively and thickness of wood is $\frac{1}{2}$ cm. When the box is empty, it weighs 15 kg and when filled with sand it weighs 100 kg. Find the weight of 1 cubic cm of wood and 1 cubic cm of sand.

35. The following table gives the distribution of students of two sections according to the marks obtained by them.

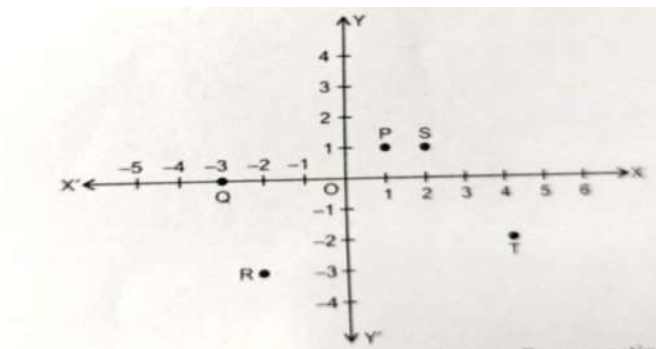
SECTION A		SECTION B	
MARKS	Frequency	MARKS	Frequency
0-10	3	0-10	2
10-20	5	10-20	1
20-30	2	20-30	3
30-40	7	30-40	11
40-50	10	40-50	15
50-60	13	50-60	9
60-70	8	60-70	6
70-80	2	70-80	3

Represent the marks of the students of both the sections on the same graph by two frequency polygons.

SECTION-E

Case study based questions are compulsory. (Questions 36-38)

36. Five friends playing a game in which they are standing at different position, P, S, T, R and Q. On the basis of the given graph, answer the following questions:

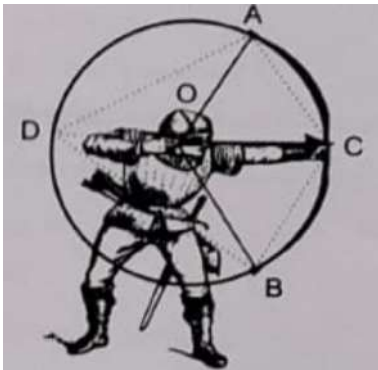


- (i) Name the point whose y - coordinate is zero: [1]
- (ii) Name the polygon formed on joining all these five points in an order: [1]
- (iii) Find the distance between friend P and T. [2]

OR

(iii) Who is at farthest distance from P. Justify.

37. In the given figure a sports person is trying to shoot an arrow from his bow which is in the shape of an arc of a circle with centre O and radius 14 cm. A and B are the end points of the bow and C is the point where the arrow touches the bow. D is a point on the circle such that DC is a diameter. Answer the following questions:

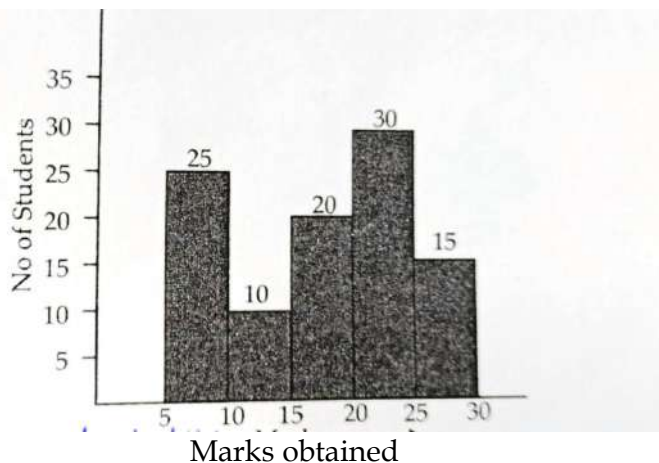


(a) Find the length of chord AB if AB and OC bisect each other. [2]

OR

- (a) If $DC = 14$ cm and $AC = 7$ cm, find AD. [1]
- (b) If $\angle AOB = 110^\circ$, find $\angle ACB$. [1]
- (c) If $\angle AOC = 55^\circ$, find $\angle OAC$. [1]

38. Given below is the bar graph indicating the mark obtained out of 30 in science paper by 100 students. Study the following graph and answer the following questions:



- (i) What is the probability of students getting less than 20 marks? [1]
- (ii) What is the probability of students belonging to the highest marks group? [1]
- (iii) What is probability of students getting more than 20 marks. [2]

OR

(iii) What is the probability of students getting at most 15 marks



DELHI PUBLIC SCHOOL

SAIL TOWNSHIP, RANCHI

ANNUAL EXAMINATION (2022-23)

Class - IX
Time - 3 Hours

Subject - English
Maximum Marks - 80

General Instructions:

1. This paper is divided into 3 sections: A, B and C. All the sections are compulsory.
 2. Separate instructions are given with each section and question, wherever necessary. Read the instructions very carefully and follow them faithfully.
 3. Do not exceed the prescribed word limit while answering the questions.
-

SECTION - A

READING (20 marks)

I. Read the given passage carefully :

1. Floods are not new to India and this sub-continent, but in recent years the problem has received much greater attention perhaps largely because it has led to much greater damage than in the past. Even though information on the impending occurrence of floods is now more accurate and certainly more timely, often there is very little time or support infrastructure in place by which damage can be minimized. This is particularly true in the case of flash floods resulting from sudden and excessively heavy rain.

In the case of India, flooding is very much a function of the seasonal nature of our rainfall. The monsoons are spread over a short period during the year and often bring a concentrated volume of rain, which cannot be absorbed by the earth and finds outlet only in the form of streams that join up with our major river systems.

2. But, flooding is not confined only to the main rivers of the country, often smaller tributaries and streams can cause heavy damage as well. Once these streams spill over their banks they could cause excessive harm, mainly because those living near the banks of these streams particularly in mountain areas do not have easy recourse to moving away quickly.

One major factor that could lead to a higher severity of flooding in the future is the danger of climate change. While the evidence of the nature of impacts resulting from climate change on precipitation and flooding at the regional level is not entirely clear, it could happen that the Indian subcontinent witnesses and suffers the effects of a significantly changed pattern of monsoons. One set of scientists has estimated that the monsoons could be shorter in duration, but far more intensive. In other words, much greater precipitation would take place in a much shorter period of time, thereby increasing the danger of floods. Climate change is the result of

human actions through the increased concentration of green house gases in the atmosphere, of which carbon dioxide is the most prominent.

3. At the local level also human actions have heightened the danger of flood through the cutting of trees in the mountains as well as in the plains. In the case of India, the ecological damage through deforestation of the Himalayas has led to large-scale erosion of the mountain slopes and high levels of siltation. This leads to deposition of rock particles on the riverbeds in the plains and hence spill over of water whenever the volume in the river reaches a certain level.
4. With siltation on the river beds, flooding occurs even at very shallow water levels. The vulnerability of the population has increased substantially because of population pressures, symbolized, for instance, by the stubborn and perhaps helpless settling of slum dweller so on the banks of the river Yamuna in Delhi, which is merely a trickle most of the year, but bursting its banks during the monsoons as has been the case this year.

Flood forecasting is critical to minimizing the damage from floods. It is for this reason that the Central Water Commission has set up a network of forecasting stations, which cover the most important flood prone inter-state rivers in the country. These stations produce forecasts that are used to alert the public and to mobilize various official agencies so that they take both preventive as well as relief measures whenever required.

5. However, even in cases where forecasts have been timely and generally accurate, people have often been reluctant to move away, because in most cases they lack the means and physical options for moving away from a danger zone to one that is relatively safe. In the case of Flash floods, forecasts are difficult to make, and often the time available for relief is very short.

On the basis of your reading of the passage answer the following questions : (1×10=10)

- (i) The problem of floods has been considered important recently because.....
 - (a) there are flash floods
 - (b) floods are unpredictable
 - (c) the rivers change their courses
 - (d) these cause much greater damage
- (ii) The danger of floods is not minimised as
 - (a) flood forecasting is inaccurate
 - (b) there is little time available for safety measures
 - (c) people are scared and act in panic
 - (d) support infrastructure is poor
- (iii) India suffers from floods during monsoons because
 - (a) it rains very heavily and continually
 - (b) the embankments of the rivers are weak
 - (c) the streams and rivers spill over
 - (d) the streams are full of silt

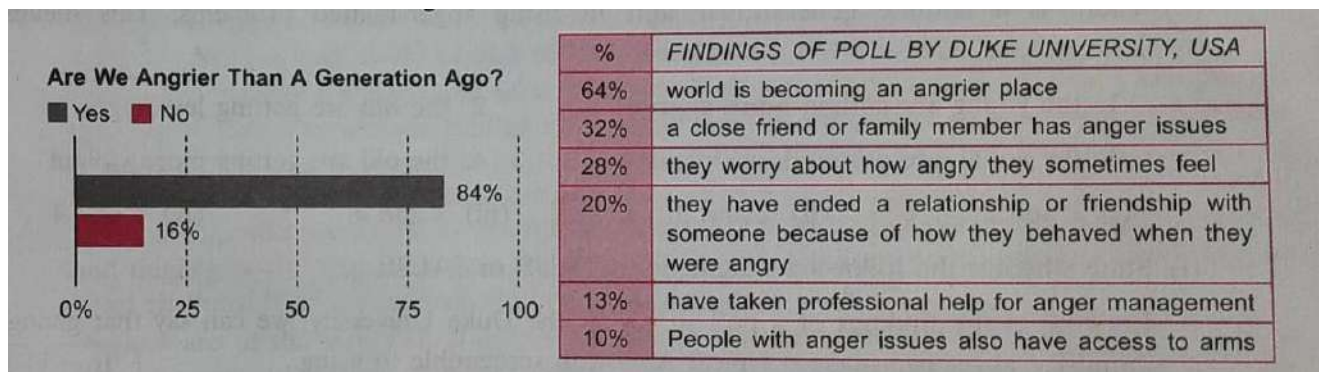
- (iv) Climate change is the direct result of.....
- (a) increased concentration of green house gases
 - (b) explosion of nuclear devices
 - (c) fire in oil wells in the gulf region
 - (d) significantly changed pattern of monsoons
- (v) The worst hit people are slum dwellers because.....
- (a) they are stubborn and helpless
 - (b) they do not have means to move away quickly
 - (c) they have concentrated in large numbers
 - (d) they have settled on the banks of the rivers
- (vi) The word 'precipitation' in para 3 means
- (a) forming a cloud
 - (b) separation of solid material from liquid
 - (c) falling of rain in an area
 - (d) the quality of being exact or accurate
- (vii) Which out of the following has not heightened the danger of floods in India during monsoons?
- (a) deforestation of the Himalayas
 - (b) large-scale erosion of the mountain slopes
 - (c) deposition of rock particles on the riverbeds in the plains
 - (d) Rain water harvesting
- (viii) What is the meaning of flashfloods?
- (a) flashing and lightening
 - (b) thunderstorm
 - (c) sudden and excessive heavy rain
 - (d) None of the above
- (ix) Which word in para 4 means the same as "the state of being unprotected"?
- (a) Siltation
 - (b) Substantially
 - (c) Vulnerability
 - (d) Stubborn
- (x) Which is the synonym of the word reluctant in para 5 ?
- (a) Disposed
 - (b) Unwilling
 - (c) Interested
 - (d) Inclined

II. Read the following passage carefully :

1. Anger is usually defined as a strong feeling of hostility, displeasure, indignation, rage or annoyance. It is an emotional state that is accompanied by physiological and biological changes including an increase in heart rate and blood pressure, as well as an increase in the levels of one's energy hormones, adrenaline, and noradrenaline. An angry mind often loses its capacity

to think properly. Anger problems seem to be growing in scope and intensity and the collateral issues associated run the risk of becoming more explosive and destructive. While anger is a normal human emotion, ongoing impulsive anger often leads to massive, sometimes irrevocable, problems in interpersonal relationships, work and on general quality of life. People that have difficulty managing anger are susceptible to road rage, verbal and physical violence, and some may find themselves in legal trouble due to anger-fueled incidents.

2. Anger can be caused by both external and internal events. You could be angry at a specific person (such as a co-worker or classmate) or event (a traffic jam, a cancelled flight), or your anger could be caused by worrying or brooding about your personal problems. Memories of traumatic or enraging events can also trigger angry feelings.
3. Anger in a limited quantity is considered to be good as it gives one an opportunity to unleash negative feelings. Anger is a natural, adaptive response to threats. A certain amount of anger is needed to fight, defend and justify ourselves in society. Hence anger in small quantities is needed for our survival, like it is justified to get angry when one feels that one's rights have been denied. But excessive anger can lead to destructive results including violent actions.
4. One of the most commonly used anger management methods includes breathing exercises. A number of anger management courses are available nowadays to help one control one's anger. It always helps to have someone from whom one can seek help and talk. It is important to learn how to express one's anger assertively rather than aggressively. One can also substitute the thought that makes one angry with more pleasant thoughts. Nowadays mental health professionals and psychologists are also available to help people control their anger.



On the basis of your reading of the passage, answer the following questions : (1×10=10)

- (i) Anger is a sharp response that can causechanges in a person.
- (a) physiological, biological and emotional
 - (b) biological and emotional
 - (c) emotional and hormonal
 - (d) physiological and biological

(ii) State whether the following statement is TRUE or FALSE.

According to the author: 'Anger can be good' because it helps increase negative feelings.

(iii) Fill in the blank in the following sentence.

We can say that the scale or magnitude of anger can range from

(iv) Fill in the blank in the following sentence.

These two are considered simple methods of managing your anger

(v) Select appropriate synonym for 'aggression' from the para 1 from the options provided.

- (a) hostility
- (b) friendliness
- (c) proximity
- (d) trauma

(vi) Which of these would be the best title for this passage?

- (a) Emotional Outburst
- (b) Don't Get Angry
- (c) Tame Your Anger
- (d) Anger Can Kill You!

(vii) There is a definite generational shift in rising anger-related problems. This means that

- 1. the young are getting more angry
- 2. the old are getting less angry
- 3. the young are getting less violent
- 4. the old are getting more violent

- (a) 1 and 2
- (b) 2 and 3
- (c) 3 and 4
- (d) 1 and 4

(viii) State whether the following statements is TRUE or FALSE.

Looking at the findings of a poll survey by Duke University, 10% of people with anger issues have taken professional help for anger management.

(ix) According to the experts, anger can get manifested in other ways than getting physically violent. Identify which one of the following does not fall under physical violence.

- (a) physical quarrels
- (b) road rage
- (c) verbal abuse
- (d) kicking

(x) Which word in para 1. is the synonym of the word 'unrectifiable' :

- (a) collateral
- (b) susceptible
- (c) irrevocable
- (d) noradrenaline

SECTION - B

GRAMMAR (10 marks)

III. Answer ANY TEN of the following questions :

(1×10 =10)

(i) According to the NASA astronaut Neil Armstrong, the aliens _____ a base on the Moon.

- (a) is having
- (b) have
- (c) has
- (d) are having

(ii) Read the conversation between a doctor and his patient. Complete the sentence by reporting the patient's reply correctly.

Doctor : How do you feel now?

Patient : I feel slightly better.

The doctor, while trying to figure out his patient's ailment, asked how he felt then, to which, the patient affirmed _____.

(iii) Fill in the blank by choosing the correct option, to complete the conversation between Jim to Della.

_____ you prepare a cup of tea for me, please?

- (a) Will
- (b) Could
- (c) Can
- (d) Would

(iv) Select the option that identifies the error and supplies the correction for the following line, from a news report:

The roof and the backside of the bus was blown away by the blast that occurred on Thursday, but no one was injured.

Option No.	Error	Correction
(a)	was	were
(b)	away	off
(c)	occurred	occur
(d)	but	yet

- (v) On my friend's farm, they _____ an alarm clock because the cockerel _____ at five o'clock every morning without fail.
- (a) don't need / crows
 (b) haven't needed / was crowing
 (c) wont need / is crowing
 (d) didn't need / will crow

(vi) Fill in the blank by using the correct form of the word in the bracket, for the given portion of a letter:

Subject: Need for _____ (promote) Healthy Eating Routines

Dear Madam

This is with reference to

(vii) Report the dialogue between Jitu and Nitu, by completing the sentence:

Jitu : My crash-course batch is full as only a month is left for the final exams.

Nitu : A drowning man will catch a straw.

Jitu said that his crash-course batch was full as only a month was left for the final exams, to which Nitu said that _____.

(viii) Identify the error and supply the correction, for the following :

Maharashtra State Innovation Society

STARTUP WEEK 2021

A platform to create impact at large scale with
Government

Startups across India is eligible to apply

Use the given format for your response.

Error	Correction

(ix) Elvis went to a shop to mend his watch. The watchmaker asked a few questions related to the watch. Report his question.

Did you buy this Swiss watch at my place?

(x) Select the correct option to fill in the blank for the given line, from a health magazine.

You _____ eat to live, not live to eat.

- (a) can
- (b) might
- (c) must
- (d) should

(xi) "I am leaving the city tomorrow," the lecturer said.

The lecturer said that _____ leaving the city _____.

- (a) he is, tomorrow
- (b) he was, the following day
- (c) he was, that day
- (d) I was, previous day

(xii) Identify the error in the given sentence from a school magazine report and supply the correction.

Critics have time and again points out that our education system tends to widely judge different students on single-line parameters, which is unfair.

Use the given format for your response.

Error	Correction

CREATIVE WRITING SKILLS (10 marks)

IV.

1. Attempt any one from [A] and [B] given below :

(5 marks)

[A] Write a paragraph in about 100 -120 words describing the horrible experience that you had when your shoes and the main bag were stolen during a railway journey.

OR

[B] Write a Factual Description of your Grandmother using the following cues in 100 - 120 words.

Name - relationship - age - profession (if any)

Physical Appearance - height build up - facial features - dressing style

Habits - emotional nature - intellectual traits

Any other relevant point (with supporting incident or achievement)

2. Attempt any one from [A] and [B] given below :

(5 marks)

[A] Develop a story in 100 - 120 words beginning from the sentence given below :

How foolish I was to have believed that young woman.....

OR

[B] You are Anirudh / Ruhi. Your father was invited to be the Chief Guest on the Annual Day of a blind school. You were wondering as to how such an event would turn up and therefore you decided to go along with him. When you saw the whole function you were so moved and inspired by the systematic execution of the whole event that you decided to record this day as a diary entry describing your experience. Write the diary entry in 100 - 120 words.

SECTION - C

LITERATURE (40 marks)

V. Reference to the context

1. Read the given extract carefully and answer the questions that follows choosing the correct option. Answer ANY ONE . (5 marks)

1. [A] That I can be so affected by a few familiar phrases on the bansuri, surprises me at first, for on the previous occasions that I have returned home after a long absence abroad, I have hardly noticed such details, and certainly have not invested them with the significance I now do.

(i) Where does the writer hear the bansuri?

- (a) in a corner of the square
- (b) in the city hall
- (c) on the banks of river Bagmati
- (d) in the temple

(ii) What does 'a few familiar phrases on the bansuri' refer to?

- (a) a familiar tune
- (b) familiar words
- (c) familiar conversation with the bansuri player
- (d) remarks by the crowd

(iii) What surprised the author?

- (a) His disappointment at the out-of-tune bansuri.
- (b) His anger at the bansuri player who was not playing the bansuri well.
- (c) His envy at the bansuri player's talent.
- (d) His own emotional reaction to the bansuri recital.

- (iv) What does the author mean by 'invested them with the significance'?
- (a) gave them as much importance
 - (b) invested money in them because they were important
 - (c) considered them unimportant
 - (d) ignored them because they were unimportant
- (v) In his book 'Heaven Lake' (from which this extract has been taken), the author describes his travels from
- (a) Nepal to India
 - (b) India to Nepal
 - (c) India to China
 - (d) China to India via Nepal

OR

1. [B] Evelyn Glennie has already accomplished more than most people twice her age. She has brought percussion to the front of the orchestra and demonstrated that it can be very moving. She has given inspiration to those who are handicapped, people who look to her and say, 'If she can do it, I can.'

- (i) What did Evelyn want to spread through her music?
- (a) message of love, peace and happiness
 - (b) music is not difficult
 - (c) music is not difficult for deaf people
 - (d) deaf people can learn music
- (ii) What accomplishments does this passage refer to?
- (a) She has brought percussion to the forefront.
 - (b) She gives regular concerts.
 - (c) She has learned basic Japanese.
 - (d) She has lifted all top awards that take someone a lifetime to achieve.
- (iii) The meaning of 'demonstrated' is
- (a) shone
 - (b) shown
 - (c) spectacle
 - (d) soon
- (iv) 'It can be very moving' means
- (a) it can displace you from your seat
 - (b) it can push you
 - (c) it can affect you emotionally
 - (d) it can influence you for a few moments
- (v) 'Look to her' can be replaced with
- (a) admire her
 - (b) glance at her
 - (c) gaze at her
 - (d) she is very tall so they look up at her

2. Read the given extract carefully and answer the questions that follows choosing the correct option. Answer ANY ONE . (5 marks)

2. [A] Oh, I kept the first for another day!

Yet knowing how way leads on to way,

I doubted if I should ever come back.

(i) Which path did the poet choose?

- (a) He chose the second road and kept the first one for another day.
- (b) He chose the first road and kept the second one for another day.
- (c) He rejected both and went back home.
- (d) He walked one and then came back to try another.

(ii) What were the poet's doubts?

- (a) If he would ever be able to try the second road.
- (b) If he would ever return to try the first road.
- (c) If he would ever be able to try both.
- (d) If he would be able to try the third path.

(iii) What is meant by 'way leads on to way' ?

- (a) One path leads to another.
- (b) All paths merge at some point.
- (c) It's easier to travel on good roads.
- (d) All roads are interconnected.

(iv) Name the poet.

- (a) Robert Snow
- (b) Robert Frost
- (c) Robert Flakes
- (d) Robert Hail

(v) What truth of life is hidden in these lines?

- (a) Life is a wonderful journey.
- (b) We are all travelers.
- (c) Life always moves forward.
- (d) The world is a guest house.

OR

2. [B] No motion has she now, no force ---

She neither hears nor sees,

Rolled round in earth's diurnal course

With rocks and stones and trees.

- (i) Who is describing the current status of his beloved ?
- Robert Frost
 - W.B. Yeats
 - William Wordsworth
 - John Keats
- (ii) What is meant by the words 'neither hears nor sees'?
- She's so far that she can't hear the poet's voice.
 - Her sight has become so weak that she can't see the poet.
 - The poet has become old so, he can neither hear nor see Lucy.
 - These words indicate a sense of lifelessness or death.
- (iii) What does the death of Lucy suggest about all men or human beings?
- All men will be subjected to the earth's motions eventually.
 - All men will be subjected to their own emotions and feelings.
 - All men will be subjected to the ups and downs of life.
 - All men will be subjected to joys and sorrows after death.
- (iv) What does the poet mean by 'diurnal course'?
- Daily rotation of earth on its axis.
 - The daily revolution of earth around the sun.
 - The daily routine of life.
 - The daily routine of Lucy.
- (v) Which poetic device has been used by the poet in the third line of the extract?
- Personification
 - Metaphor
 - Transferred Epithet
 - Alliteration

VI. Answer ANY FOUR of the following questions in 40 - 50 words : **(3x4=12)**

- What did Kezia usually find when she wanted to interact with her parents ?
- What does the word 'slumber' mean? In what sense was the poet using it ?
- What are Maria Sharapova's comments about her affluent financial status ?
- What happens when we pick up arms against others ?
- Describe the meaning of the last few lines uttered by Dr. A.P.J Abdul Kalam's father?

VII. Answer ANY TWO of the following questions in 40 - 50 words : **(3x2=6)**

- 'The little Swallow grew colder and colder but kept up his determination'. How did the bird show his great strength and courage?
- Why did the narrator feel awkward during the first year of high school ?
- What was so ' amazing ' about Iswaran?

Q. VIII. Answer ANY ONE of the following questions in 100 - 120 words : (1×6=6)

(i) Imagine Santosh Yadav and Maria Sharapova met each other in an award ceremony . While talking to each other they started discussing about their parents' contribution in their success. Develop an imaginary conversation between the two, including the needful.

You may begin like this :

Maria - Well ! Your parents too must be very happy at your success like mine.

Santosh - Yes, indeed they are ! But there was a time when they were against my passion.....

OR

(ii) Develop a dialogue between the protagonists of 'If I were You' and 'The Snake and the Mirror' on a 'near-death experience'.

IX. Answer ANY ONE of the following questions in 100 - 120 words : (1×6=6)

(i) 'Society has the power to reform a man .' Bring out the significance of this statement in changing the life of Lushkoff with reference to the story 'The Beggar'.

OR

(ii) Which other character from the book, MOMENTS, do you think, resembles the protagonist of A House is Not a Home. Also support your answer with the similarities in their character as shown in the stories.



DELHI PUBLIC SCHOOL

SAIL TOWNSHIP, RANCHI

ANNUAL EXAMINATION (2022-23)

Class - IX
Time - 3 Hours

Subject - Social Science
Maximum Marks- 80

General Instructions:

- i. All questions are compulsory
 - ii. There is no overall choice in the question paper. However, an internal choice has been provided in few questions. Only one of the choices in such questions have to be attempted.
 - iii. In addition to this, separate instructions are given with each section and question, wherever necessary.
-

HISTORY

SECTION-A

MCQ's (1X4=4)

1. Who was Hitler's propaganda minister ?
 - (a) Goebbels
 - (b) Helmuth
 - (c) Hjalmar
 - (d) Niemoeller
2. Dhangars were an important pastoralist community of _____
 - (a) Punjab
 - (b) Assam
 - (c) Maharashtra
 - (d) Himachal Pradesh
3. The Maasai cattle herders primarily live in _____
 - (a) South Africa
 - (b) West Africa
 - (c) East Africa
 - (d) North Africa
4. This law was implemented to take control over the land which was not under cultivation.
 - (a) Waste land rules
 - (b) Forest Act
 - (c) Criminal Tribe Act
 - (d) Criminal Act

SECTION-B
VERY SHORT ANSWER QUESTION (2X1=2)

5. What was the Enabling Act?

SECTION-C
SHORT ANSWER QUESTION (3X1=3)

6. What social changes can be seen in society after Industrialisation?

OR

What changes were brought about by the Bolsheviks immediately after the October Revolution ?

SECTION-D
LONG ANSWER BASED QUESTION (5X1=5)

7. What led to subsistence crisis in France?

SECTION-E
CASE BASED QUESTION (4X1=4)

8. **Read the given extract and answer the following questions:**

Brandis realised that a proper system had to be introduced to manage the forests and people had to be trained in the science of conservation. This system would need legal sanction. Rules about the use of forest resources had to be framed. Felling of trees and grazing had to be restricted so that forests could be preserved for timber production. Anybody who cut trees without following the system had to be punished. So Brandis set up the Indian Forest Service in 1864 and helped formulate the Indian Forest Act of 1865. The Imperial Forest Research Institute was also set up. The system they taught here was called 'scientific forestry'.

- 8.1. Who set up the Indian Forest Service and in which year ? (1)
- 8.2. When and where was the Imperial Forest Research Institute set up ? (1)
- 8.3. What do you know about 'scientific forestry'? (2)

SECTION-F
MAP SKILL BASED QUESTION (1X2=2)

9. Two places A and B have been marked on the given outline map of France. Identify them and write their correct names on the lines drawn near them.

- A. Identify the port of France related to slave trade. (1)
- B. Identify the place from where the National Anthem of France got its name. (1)

POLITICAL SCIENCE

SECTION-A

MCQ's (1X6=6)

1. Who issued the 'Legal Framework Order'?
 - (a) ZANU
 - (b) Robert Mugabe
 - (c) General Musharaff
 - (d) None of these
2. Who often bitterly criticized Mahatma Gandhi and his visions ?
 - (a) Pt. Jawaharlal Nehru
 - (b) Dr. B. R. Ambedkar
 - (c) Mr. Shyama Prasad Mukherjee
 - (d) Mr. SomnathLahiri
3. Read the statement and choose the right word:
It is a mechanism by which people can choose their representatives at regular intervals and change them if they wish to do so.
 - (a) Elections
 - (b) Constitution
 - (c) Impeachment
 - (d) Campaign
4. 'Democratic governments insist on institutions'. Choose the appropriate answer.
 - A. Institutions make it difficult to rush through a bad decision.
 - B. They provide an opportunity for a wider set of people to be consulted in any decision.
 - (a) A is true but B is false.
 - (b) A is false but B is true.
 - (c) Both A and B are true.
 - (d) Both A and B are false.
5. Which of the following is not a quality of 'Rights'?
 - (a) Rights are reasonable claims of persons.
 - (b) These should be recognised by society.
 - (c) These should be sanctioned by law.
 - (d) These are granted by all the nations to their citizens.
6. **Assertion (A):** Representative government consider the most common form of democracy.
Reason (R): People in democracy can sit together and take decisions collectively.
 - (a) Both A and R are true and R is the correct explanation of A.
 - (b) Both A and R are true and R is not the correct explanation of A.
 - (c) A is true but R is false.
 - (d) A is false but R is true.

SECTION-B
VERY SHORT ANSWER QUESTION (2X1=2)

7. What choices are given to a voter during elections?

SECTION-C
SHORT ANSWER QUESTION (3X1=3)

8. Which three evils are tackled by right against exploitation?

SECTION-D
LONG ANSWER BASED QUESTION (5X1=5)

9. What powers rest with the Prime Minister of India?

OR

Explain any five powers of the Supreme Court of India.

SECTION-E
CASE BASED QUESTION (4X1=4)

10. **Read the given extract and answer the following questions:**

Since its independence in 1930, Mexico holds elections after every six years to elect its President. The country has never been under a military or dictator's rule but until 2000 every election was won by a party called PRI. Opposition parties did contest elections but never managed to win. The PRI is known to use many dirty tricks to win elections.

10.1. Give the full form of PRI. (1)

10.2. How can you say that people did not have any choice in democratic Mexico? (1)

10.3. Why were every elections won by PRI in Mexico? (2)

ECONOMICS

SECTION-A

MCQ's (1X7=7)

1. Which among the following states was first to try out the modern farming methods in India?

- (a) Haryana
- (b) Jharkhand
- (c) Bihar
- (d) Orissa

2. Which of the following statements is correct about the farmers in Palampur?
- (a) Most dalit families in Palampur have no land for cultivation.
 - (b) Almost 450 families in Palampur are landless labourers.
 - (c) Most farmers in Palampur cultivate more than 2 hectares of land.
 - (d) Activities such as small scale manufacturing, dairy, transport. etc. are carried out on a limited scale.
3. Which age group of children does the *SarvaShikshaA bhiyan* aim to promote education?
- (a) 6-14 years
 - (b) 6-15 years
 - (c) 8-14 years
 - (d) 8-15 years
4. A situation wherein a number of youth with matriculation, graduation and post-graduation degrees are not able to find suitable jobs is known as:
- (a) seasonal unemployment
 - (b) disguised unemployment
 - (c) educated unemployment
 - (d) uneducated unemployment
5. Poverty has declined substantially in China and South East Asian countries. Which of the following is/are appropriate reason/s for the same?
- A. Massive investment in human resources.
 - B. Rapid economic growth.
- (a) A is true but B is false
 - (b) A is false but B is true
 - (c) Both A and B are true
 - (d) Both A and B are false
6. Which of the following is not a component of food security?
- (a) Availability
 - (b) Accessibility
 - (c) Affordability
 - (d) Accountability
7. Which type of hunger is a consequence of diets persistently inadequate in terms of quantity and quality?
- (a) Chronic hunger
 - (b) Seasonal hunger
 - (c) Fast kept due to spiritual reasons
 - (d) None of the above

SECTION-B
VERY SHORT ANSWER QUESTION (2X1=2)

8. What are market activities?

SECTION-C

SHORT ANSWER QUESTIONS (3X2=6)

9. What is the role of health in the working life of an individual?

10. Why is the Public Distribution System criticised?

OR

What are the three important Food Intervention Programmes?

SECTION-D

LONG ANSWER BASED QUESTION (5X1=5)

11. What is the concept of poverty line? How does it vary with time and place?

OR

Why poverty still remains a challenge for the Indian government?

GEOGRAPHY

SECTION - A

1. India's contact with the world have continued through ages. Which is the oldest way of India's connection with the world ?

[1]

- A. Air route.
- B. Sea route
- C. Land route
- D. None of the above

2. Different seasons of India have different characteristics. Identify the seasons with the help of following characteristics.

[1]

Seasons	Characteristics
a. Hot weather seasons	i. Break in monsoon
b. Cold weather seasons	ii. October heat
c. Rainy season	iii. Mahawat
d. Retreating monsoon	iv. Kaal Baisakhi

Options :

- A. a-iv,b-iii,c-ii,d-i
- B. a-ii,b-iii,c-iv,d-i
- C. a-ii,b-iv,c-i,d-iii
- D. a-iv,b-iii,c-i,d-ii

3. Which of the following are most populated states in India? [1]
- A. Bihar, West Bengal, Uttar Pradesh, Maharashtra, Kerala
 - B. Uttar Pradesh, Bihar, West Bengal, Tamil Nadu and Andhra Pradesh
 - C. Andhra Pradesh, West Bengal, Bihar, Maharashtra, Uttar Pradesh
 - D. Uttar Pradesh, Madhya Pradesh, Andhra Pradesh, West Bengal, Tamil Nadu

SECTION - B

4. Why are rivers important for the country's economy ? [2]

OR

Write two characteristics of the Brahmaputra River Basin.

SECTION -C

5. Distinguish between tropical evergreen and deciduous forests. (Write three points of each) [3]

SECTION -D

6. Describe the regional variations in the climatic conditions of India with the help of suitable examples. [5]

OR

“The pressure and wind conditions over India are unique.” Explain this statement with five suitable points.

SECTION -E

7. Read the given extract and answer the following questions . [4]

The northern plain has been formed by the interplay of the three major river systems, namely- the Indus, the Ganga and the Brahmaputra along with their tributaries. This plain is formed of alluvial soil. The deposition of alluvium in a vast basin lying at the foothills of the Himalayas over millions of years, formed this fertile plain. It spreads over an area of 7 lakh sq.km. The plain being about 2400 km long and 240 to 320 km broad, is a densely populated physiographic division. The rivers coming from northern mountains are involved in depositional work. In the lower course, due to gentle slope, the velocity of the river decreases, which results in the formation of riverine islands.

The Northern Plain is broadly divided into three sections. The Western part of the Northern Plain is referred to as the Punjab Plains. Formed by the Indus and its tributaries, the larger part of this plain lies in Pakistan. The Indus and its tributaries – the Jhelum, the Chenab, the Ravi, the Beas and the Satluj originate in the Himalaya. This section of the plain is dominated by the doabs.

- 7.1 How are Northern Plains formed? [1]

- 7.2 Name the depositional feature which is formed in the lower course of the Northern Plain. [1]

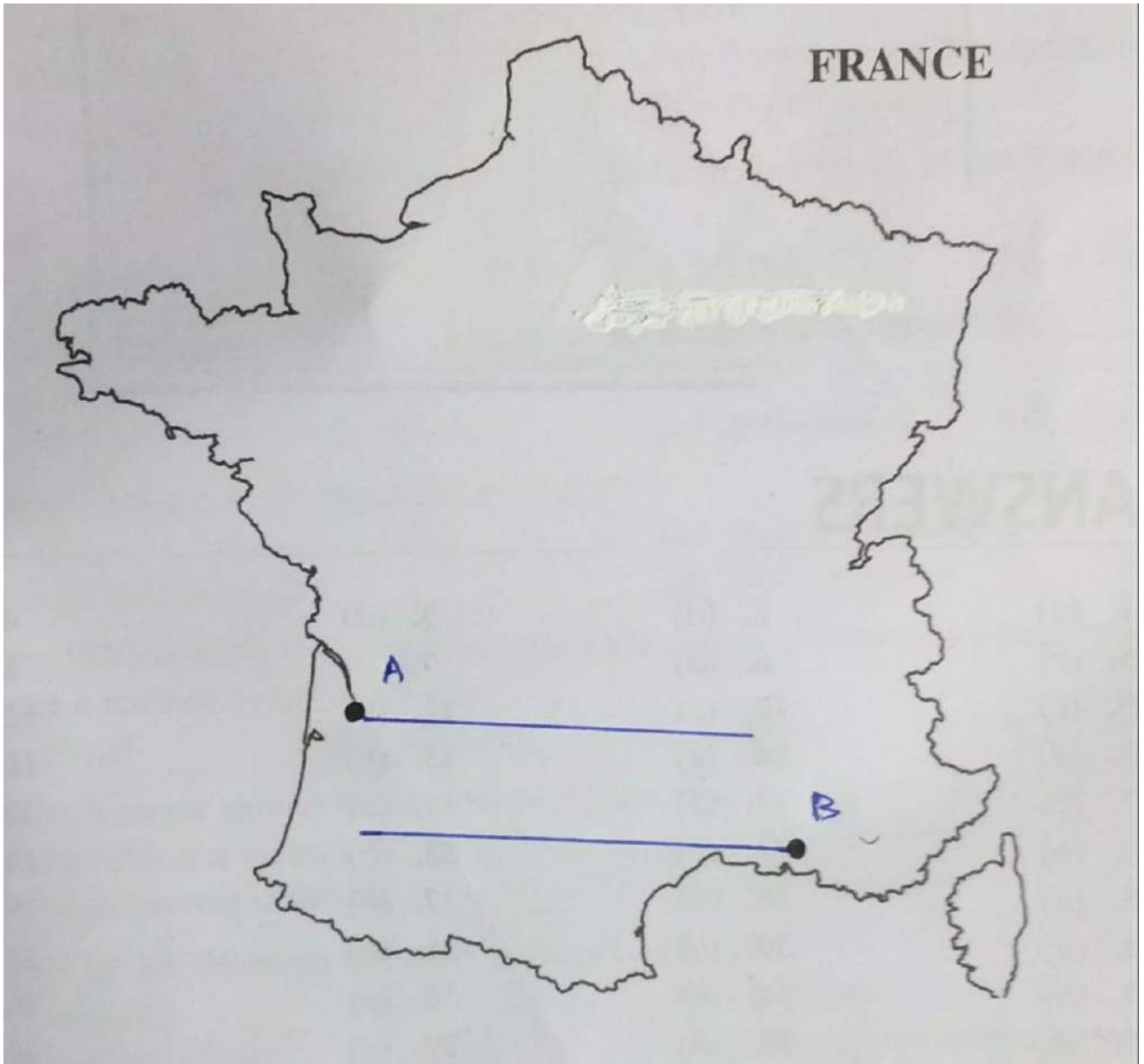
- 7.3 “Northern plain is a densely populated physiographic division .” Analyse two reasons . [2]

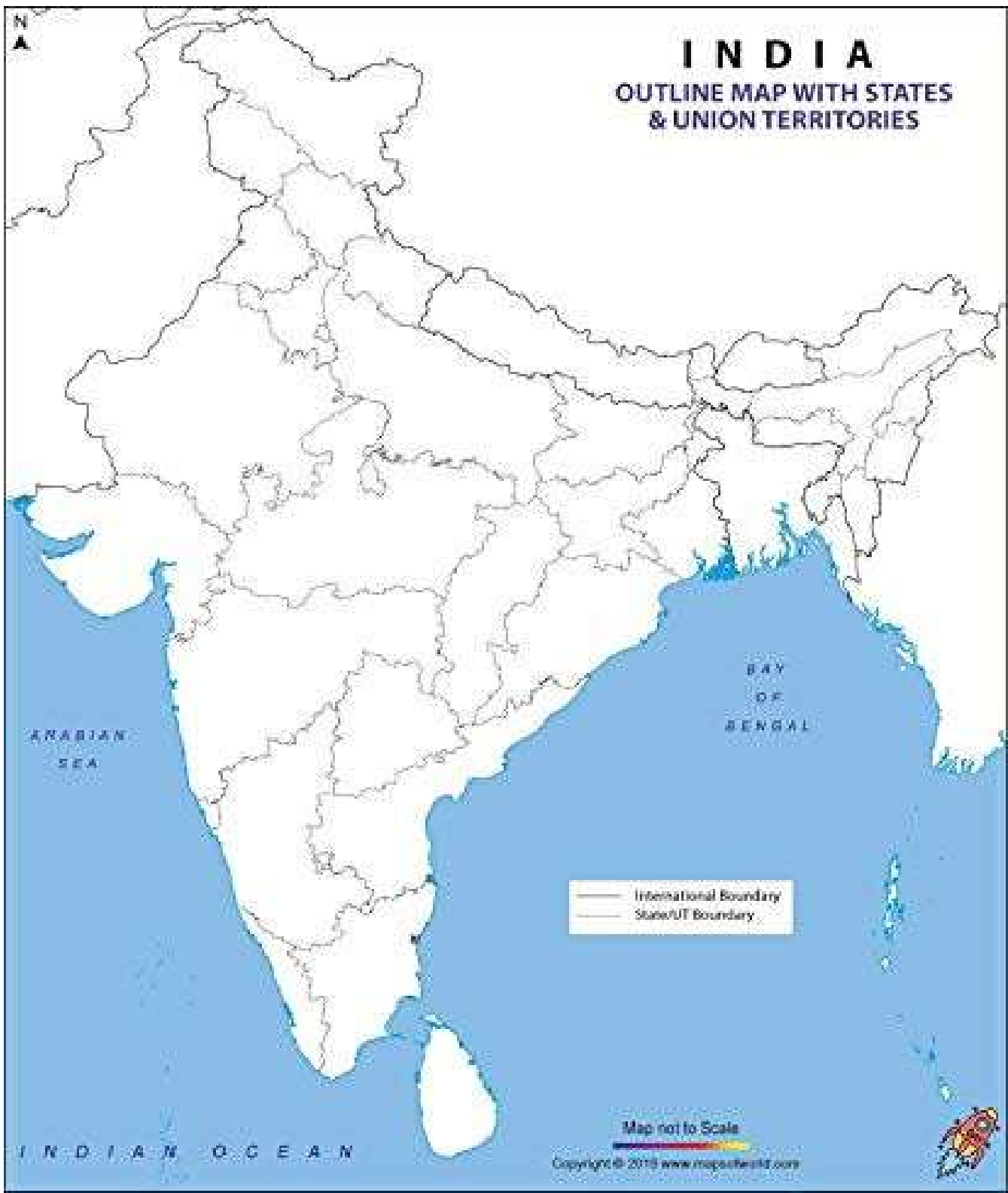
SECTION -F

8. On the Political Map of India locate and label any **THREE** of the following with suitable symbols.

[3]

- A. Wular Lake
- B. Corbett National Park
- C. Mudumalai Wildlife Sanctuary
- D. The State having lowest density of population







DELHI PUBLIC SCHOOL

SAIL TOWNSHIP, RANCHI

ANNUAL EXAMINATION (2022-23)

Class - IX
Time - 2 Hours

Subject - Artificial Inelegance
Maximum Marks- 50

General Instructions:

1. Please read the instructions carefully.
2. This Question Paper consists of **20 questions** in two sections: Section A & Section B.
3. Section A has Objective type questions whereas Section B contains Subjective type questions.
4. **Out of the given (5 + 15 =) 20 questions, a candidate has to answer (5 + 10 =) 15 questions in the allotted (maximum) time of 2 hours.**
5. All questions of a particular section must be attempted in the correct order.
6. **SECTION A - OBJECTIVE TYPE QUESTIONS (24 MARKS):**
 - i. This section has 05 questions.
 - ii. Marks allotted are mentioned against each question/part.
 - iii. There is no negative marking.
 - iv. Do as per the instructions given.
7. **SECTION B - SUBJECTIVE TYPE QUESTIONS (26 MARKS):**
 - i. This section has 15 questions.
 - ii. A candidate has to do 10 questions.
 - iii. Do as per the instructions given.
 - iv. Marks allotted are mentioned against each question/part.

SECTION A: OBJECTIVE TYPE QUESTIONS

Q. 1	Answer any 3 out of the given 5 questions on Employability Skills (1 x 3 = 3 marks)	
i.	The entrepreneurial skill that refers to the ability to handle multiple responsibilities at the same time is a) Self-confidence b) Multitasking c) Passion d) None of these	1
ii.	_____ is a quality of an entrepreneur that keeps him or her from discouraged by failure.	1
iii.	State which category - manufacturing, trade, service, or hybrid - the following business belong to: Bosco runs a dance academy where he teaches different dance forms to his students.	1

iv.	Daffodils international is an institution that sells book of different publishers and also run primary classes. It is a a) Trade business b) Service business c) Hybrid business d) None of these	1
v.	_____ is a business that involves the selling of an intangible service.	1

Q. 2	Answer any 5 out of the given 6 questions (1 x 5 = 5 marks)	
i.	Clustering falls under which type of machine learning method? a) Supervised learning b) Unsupervised learning c) Reinforcement learning d) None of these	1
ii.	Classification falls under which type of learning? a) Supervised learning b) Unsupervised learning c) Reinforcement learning d) None of these	1
iii.	Neural networks are loosely modeled on which system in the human body? a) Digestive system b) Nervous system c) Circulatory system d) None of these	1
iv.	What is the fundament unit of a neural network? a) Axon b) Dendrite c) Neuron d) None of these	1
v.	Each node in the internal layer has its own _____ .	1
vi.	_____ method is used when the data is unlabelled or random.	1

Q. 3	Answer any 5 out of the given 6 questions (1 x 5 = 5 marks)	
i.	Which operator divides the operands and returns the remainder? a) / b) % c) // d) None of these	1
ii.	Which data type in python is a sequence of characters? a) String b) Float c) Integer d) List	1
iii.	_____ refers to adding white spaces at the beginning of a line of code.	1
iv.	_____ logical operator returns True if both the statements are true.	1
v.	In python the output of the statement <i>print (10**2)</i> will be _____ .	1
vi.	The _____ loop executes a block of statement as long as given condition is true .	1

Q. 4	Answer any 5 out of the given 6 questions (1 x 5 = 5 marks)	
i.	Which of the following is an invalid statement in python? a) abc = 22 b) a, b, c = 22, 33, 44 c) a_b_c = 22 d) a b c = 22	1
ii.	What will be output of the following code? for i in range(11, 17, 2): print(i, end = ' , ')	1
iii.	What will be the output of the statement <i>print (2*("yes"+3*("!")))</i> ?	1

iv.	<p>Which of the following codes will not run due to error?</p> <ol style="list-style-type: none"> 1. Print(DPS, Ranchi) 2. 21y = 21E43 3. Y21 = 2143 <ol style="list-style-type: none"> a) All of the above b) 1. Only c) 1. And 2. only d) 1. And 3. only 	1
v.	<p>In python the user cannot _____.</p> <ol style="list-style-type: none"> a) Assign values to multiple variables in a single line b) Assign the same value to the multiple variables in a single line c) Change the data type of the variable d) Create multiple variables with the same name 	1
vi.	<p>What is the answer to this expression, 20%3?</p> <ol style="list-style-type: none"> a) 6 b) 2 c) 1 d) 5 	1

Q. 5	Answer any 6 out of the given 7 questions (1 x 6 = 6 marks)	
i.	<p>What is used to define a block of code (body of loop, function, etc) in python?</p> <ol style="list-style-type: none"> a) Curly braces b) Quotation c) Indentation d) Parenthesis 	1
ii.	<p>_____ are special symbols which represent computation. They are applied on operand(s), which can be values or variables.</p> <ol style="list-style-type: none"> a) Operators b) Operand c) Declaration d) None of the above 	1
iii.	<p>Numbers with fractions or decimal points are called _____ data type.</p> <ol style="list-style-type: none"> a) Integer b) String c) Float d) None of the above 	1

iv.	A _____ is a piece of text that doesn't impact the outcome of a programme. It's just a way to tell someone what you've done in a programme or what's going on in a block of code. a) Statement b) Comments c) Nodes d) None of the above	1
v.	IDE stands for _____. a) Integrated Development Environment b) Internal Develop Environment c) Inside Development Environment d) None of the above	1
vi.	Python _____ must be installed on our machine in order to run a Python programme. a) Interpreter b) Compiler c) Assembler d) All of the above	1
vii.	Python is a _____ programming language, which means it runs on a variety of platforms including Windows, MacOS, Linux, and the Java and .NET Virtual machines. a) Cross-platform b) Single-platform c) Code-platform d) None of the above	1

SECTION B: SUBJECTIVE TYPE QUESTIONS

Answer any 3 out of the given 5 questions on Employability Skills (2 x 3 = 6 marks) Answer each question in 20 - 30 words.

Q. 6	State any four qualities of an entrepreneur and explain how the absence of each of these qualities can make it difficult for an entrepreneur in achieving success.	2
Q. 7	What do you understand by neural network? Write any two real-life applications of neural network.	2
Q. 8	Describe the working of an artificial neural network with the help of a typical neural network diagram.	2
Q. 9	Differentiate between Rule-based approach and Machine Learning approach.	2
Q. 10	How is Deep Learning different than Machine Learning?	2

Answer any 4 out of the given 5 questions in 20 - 30 words each (2 x 4 = 8 marks)

Q. 11	<p>Write the output of the following code:</p> <pre>a = 4.5 b = 2 print (a//b)</pre>	2
Q. 12	<p>Write a python program to print the numbers from 0 to 10 using <i>for</i> loop. Sample output is given below:</p> <pre>0 1 2 3 4 5 6 7 8 9 10</pre>	2
Q. 13	<p>Write a python program to print the numbers using <i>for</i> loop as given below.</p> <pre>20 18 16 14 12</pre>	2
Q. 14	<p>Write a python program to find the sum of first 50 natural numbers using while loop.</p>	2
Q. 15	<p>What will be the output of the following python code:</p> <pre>i = 0 while i < 5: print(i) i += 1 if i == 3: break else: print(0)</pre>	2

Answer any 3 out of the given 5 questions in 50- 80 words each (4 x 3 = 12 marks)

Q. 16	<p>Explain in detail any two methods through which neural network can learn.</p>	4
Q. 17	<p>Write a python program to print the following pattern using <i>for</i> loop.</p> <pre>* * * * * * * * * * * * * * *</pre>	4

Q. 18	Write a python program to print odd numbers from 10 to 20 using <i>while</i> loop. Write the expected output of the program.	4
Q. 19	Write a python program to create a Tarot card reader. Take the input from user any four out of twelve zodiac signs (like Leo, Scorpio, Libra, Virgo) and print the prediction.	4
Q. 20	Write a python program to find the area of a right angle triangle. Take all required inputs from user.	4



DELHI PUBLIC SCHOOL
SAIL TOWNSHIP, RANCHI
ANNUAL EXAMINATION (2022-23)

Class - IX
Time - 2 Hours

Subject - Information Technology
Maximum Marks - 50

SECTION-A

1. Fill in the blanks:

[0.5x8=4]

- a) contains preloaded, predesigned images that can be used in a presentation.
- b) pane contains thumbnails of the slides of presentation in sequence of display.
- c) refers to the horizontal and vertical lines in the plot area.
- d) Active cell in a worksheet is known as..... .
- e) is used to copy format from one portion and apply it to another content.
- f) button changes the misspelt words in the whole document automatically.
- g) UNEP stands for.....
- h)..... are the mix of two or more type of businesses.

2. Select the most suitable alternative: (Answer any six)

[0.5x6=3]

- a) LLP stands for:
 - i. Limited leadership partnership
 - ii. Limited liability partnership
 - iii. Less limited partnership
 - iv. None of these
- b) Which of the following does not help in conservation of natural resources?
 - i. Using alternative Sources of energy
 - ii. Wise use of water
 - iii. Reuse elements and products
 - iv. Use of plastics

- c) is the extension of Open office Writer file .
- i. .odt
 - ii. .odw
 - iii. .doc
 - iv. .docx
- d) The default setting of margin on top and bottom in a Writer document is:
- i. .83".
 - ii. .79".
 - iii. .81".
 - iv. .80"
- e) This option accommodates text automatically within the column width by increasing row height.
- i. Wrap text.
 - ii. Shrink to fit.
 - iii. Filled.
 - iv. None of these.
- f) Which of the following help to forecast the trends on the basis of comparison?
- i. Charts
 - ii. Plots
 - iii. Legends
 - iv. None of these
- g) Which of the following is used to combine different objects together to display as a single object?
- i. Combining
 - ii. Merging
 - iii. Grouping
 - iv. Collection

3. Write the Keyboard shortcuts: (Any two)

[1X2=2]

- a) Moving to first cell of worksheet:
- b) To select a rectangular area
- c) To select a paragraph

SECTION-B

4. Short notes (Any seven)

[1X7=7]

- a) Zoom Control Slider
- b) Template
- c) Autofill
- d) Operands
- e) Pair kerning
- f) OLE
- g) Green Consumer
- h) Public Limited Company

- 5. Differentiate between :** [2X4=8]
- a) Workbook and Worksheet
 - b) AND function and OR function
 - c) Partnership and Sole Proprietorship
 - d) Sentence Case and Toggle Case

- 6. Answer in one word :(Any two)** [1X2=2]
- a) Resources which are limited and can't be recycled or regenerated easily
 - b) Unique colour or pattern used to denote an uploaded data series
 - c) Hard Copy of Slides

- 7. Long answer questions:** [2X4=8]
- a) Explain custom animation and slide transition.
 - b) Define margin and any three different line spacing options.
 - c) What is green economy and mention it's three significant features.
 - d) Write about any four characteristics of entrepreneurs.

SECTION-C

- 8. Write the use of the following functions:** [1x2=2]
- i) a) TODAY () b) MOD()

- ii) Write the Output of the following functions:** [1x2=2]
- a) NOW() b) POWER(5;3)

- 9. Practical Based questions:** [2x6=12]
- a) How can a sheet of workbook be hidden? Write down the Steps.
 - b) Explain three ways of writing formula along with examples.
 - c) Write the steps to insert a page break.
 - d) Write the steps to select non-consecutive text with mouse.

OR

- Write the steps to insert table in a document.
- e) Prithvi wants to insert a picture into a slide and add transition to that slide. Suggest the steps.
 - f) Arrange the jumbled steps and Rewrite the correct order
 - i) Press Ctrl+V from the keyboard.
 - ii) Place the insertion point on the desired area where content is required to appear.
 - iii) Copied text will appear at the insertion point.
 - iv) Select the content to the copied then click the Copy command on standard tool bar.
-



DELHI PUBLIC SCHOOL

SAIL TOWNSHIP, RANCHI

ANNUAL EXAMINATION (2022-23)

Class - IX
Time - 1 Hour

Subject - General Knowledge
Maximum Marks - 50

-
- 1) Name Full forms:- (5)
 - 1) RDBMS-
 - 2) ISP-
 - 3) IETF-
 - 4) NYC-
 - 5) ASHA-
 - 6) Define e-way bill. (1)
 - 7) India agrees to boost joint infra projects with..... (1)
 - 8) The motto of the SAF games is Peace, Prosperity and (1)
 - 9) Punia won gold in free style (65kg) wrestling. (1)
 - 10) Where was the first common wealth games held in 1930? (1)
 - 11) became the first Indian gymnast in Olympics to attempt the 'Produnova' which is called the vault of death. (1)
 - 12) is the first city in the world to stage Olympic games thrice, after 1908 and 1948 summer Olympics. (1)
 - 13) Who was awarded Nobel Peace Prize in 1979 for her humanitarian work with the poor. (1)
 - 14) is the second highest decoration and is awarded for act of gallantry on land,air or at sea.(1)
 - 15) Who was the first Deputy Prime Minister and Home Minister of independent India. (1)
 - 16) The largest living ape is (1)
 - 17) The study of dreams is called (1)
 - 18) The study of the beauty of human is called (1)
 - 19) is the largest sea bird, who spread feather 10-12 ft. (1)
 - 20) Deficiency of lead to mottling of teeth. (1)
 - 21) Cobalt is found in Vit (1)

- 22) In disease hands and legs of children get slimmed. (1)
- 23) Define Metallurgy. (1)
- 24) Define Flux. (1)
- 25) Define Allotropy. (1)
- 26) A Proton had been discovered by (1)
- 27) The charge/ mass for a neutron is (1)
- 28) The resistance of an ideal voltmeter is (1)
- 29) A deep and narrow valley with steep sides is called a (1)
- 30) What are Potholes? (1)
- 31) Which state government launched the Kisan mobile to promote buyer-seller network? (1)
- 32) Where is India's first food museum? (1)
- 33) 'Guru Nanak Jayanti is also known with which name? (1)
- 34) Who has rendered the Modern Periodic table? (1)
- 35) What is the original language of Mahabharata? (1)
- 36) Who developed the world's first universal bullet proof jacket 'Shakti'? (1)
- 37) The 'New Bank of India ' has been merged with which bank? (1)
- 38) What is the Lashkar-e-Tayyiba? (1)
- 39) What is the Earth's galaxy called? (1)
- 40) Who is the Supreme Commander of India? (1)
- 41) Who can dissolve the legislative assembly of the state? (1)
- 42) What is MoU? (1)
- 43) Define RTGS. (1)
- 44) Define Fiord. (1)
- 45) What are the two types of deficits? (1)
- 46) Write any two objectives of Public Sector. (1)
- 47) Name the two types of Respiration? (1)
- 48) Name the component of blood that fight infection? (1)
- 49) What do you mean by "Proxima d"? (1)
- 50) The Crimson rose belongs to which species? (1)